



RAWABI 608 Technical Specifications

Year Built: Newbuild
 Flag: Tuvalu
 Class: ABS
 Notation: ⚙️A1, Self-elevating Unit,
 (E) ⚙️AMS, CRC,
 Accommodation Service, CPS,
 UWILD, HELID, PMP, ENVIRO,
 SMART (INF,SHM,MHM), IDM-A, or
 equivalent

Rawabi JUB 608 is a Jack up Barge
 with:

4 Cylindrical leg with Rack and
 Pinion jacking system

Clear Deck area of 1,500 m²

Deck Strength of 5 Ton/ m²

Variable Load of 1,500 Ton

Operating Water Depth from 5m @
 LAT to 65m max @ LAT)

MAIN PARTICULARS

Principle Dimensions

Length Overall	abt 92.0 m	Breadth Moulded	40.0 m
Length Barge	66.0 m	Draft	3.5 m
Depth Moulded	6.10 m	Leg Length	107 m
Leg Quantity & Type	4, Cylindrical	Service Speed	6 Knots
Operating Air Gap	20 m	Deck Loading	5 ton/m ²
Clear Deck Area	1,500 m ²	Variable Load	1,500 Ton
Deck Capacity	750 Ton		

Capacity

Fuel Oil	352 Ton
Fresh Water	486 Ton

MACHINERIES

Main Machinery

Main Generator	4 x 1,700 kW
Emergency Generator	1 x 300 kW
Main Propulsion Thrusters	2 x 1,800 kW
Tunnel Bow Thrusters	2 x 700 kW

Deck Machinery

Windlass	1 x electro-hydraulic anchor windlass
Jacking System	Electric – Rack & Pinion
Jacking Speed	3 Feet /min
Design Capacity	4 x 14 Pinion, 6,160T
Main LEC Crane	200 Ton at outreach of 10m and 40 Ton a t Maximum outreach of 45m
Secondary LEC Crane	200 Ton at outreach of 10m and 40 Ton a t Maximum outreach of 45m



RAWABI 608 Technical Specifications

EQUIPMENTS & ELECTRONICS

Navigation Equipment & Communication System

Gyro Compass	One (1)	GMDSS Area's	A1 & A2
Radars	Two (2)	Fixed VHF Radios	Two (2)
Autopilot	One (1)	Hand-Held VHF Radios	Three (3) + chargers
Echo Sounder	One (1)	SSB	One (1)
GPS	One (1)	VSAT System	One (1)
Chart Plotter	One (1)	TV Sat Dome	One (1)
AIS	One (1)	Telephones	One (1) per room
		Speed Doppler Log	One (1)

CCTV

- Night Vision (Night Color Technology)
- Smart motion detection
- Covering all external decks, wheelhouse control station & engine room
- Covering each crane control room & crane boom

Accommodation

Total	150
Personnel Cabin Arrangement	
Single Berth Cabins	Eighteen (18)
Double Berth Cabins	Eighteen (18)
Four-man Cabins	Twenty Four (24)

Accommodation Spaces

Foreman Office	One (1)
Barge Supervisor Office	One (1)
Deck Supervisor Office	One (1)
Deck Room	One (1)
Store Room	Two (2)
Locker Room	One (1)
Arab Lounge	One (1)
Mess Room	One (1)
Laundry	One (1)
Paint Locker Room	One (1)

Fire Fighting / Extinguishing System

Internal

SOLAS compliant fixed Fire Fighting System
H2S and Hydrocarbon Vapor Sensors covering the entire vessel's exterior (5 points)

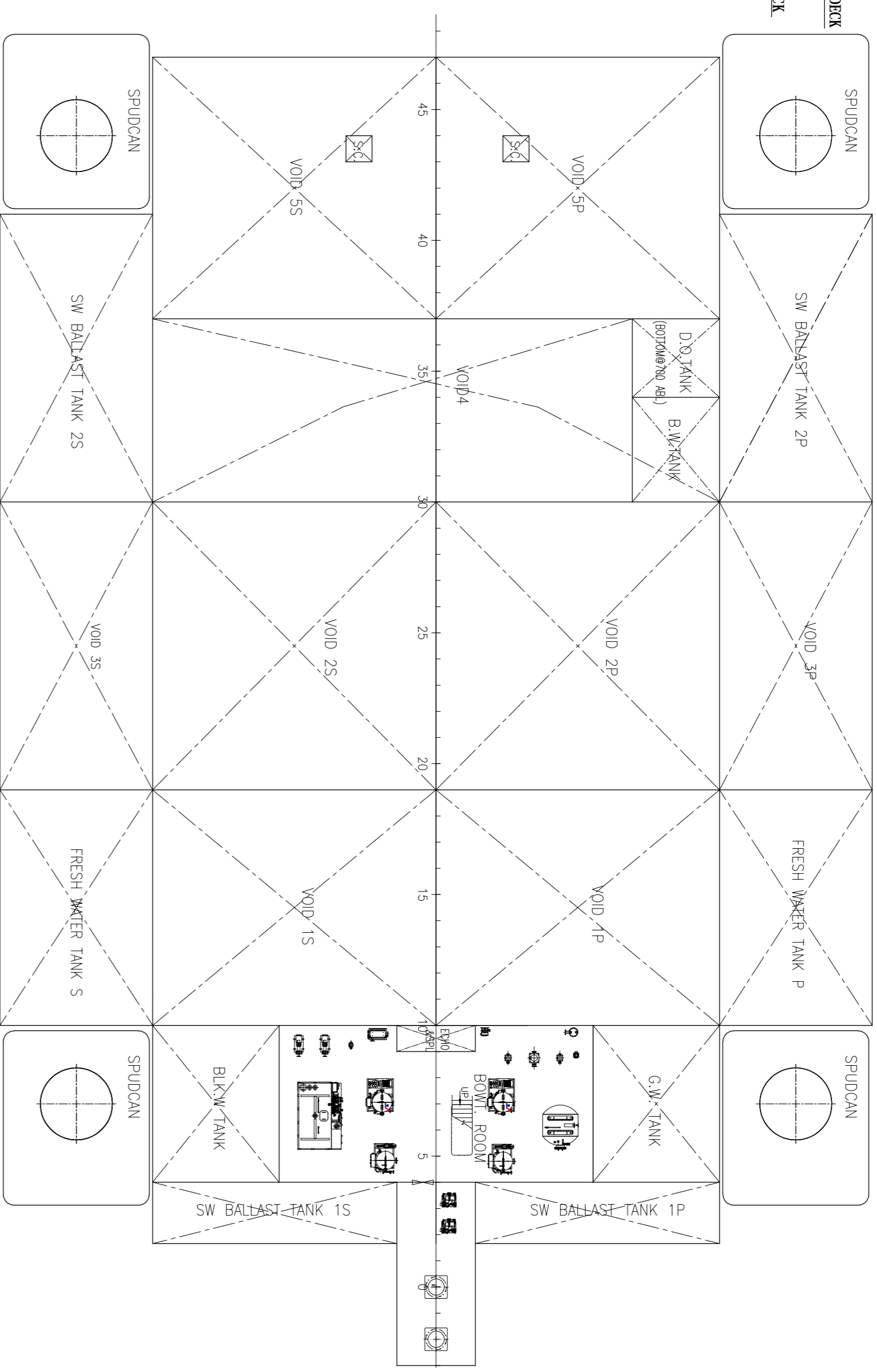
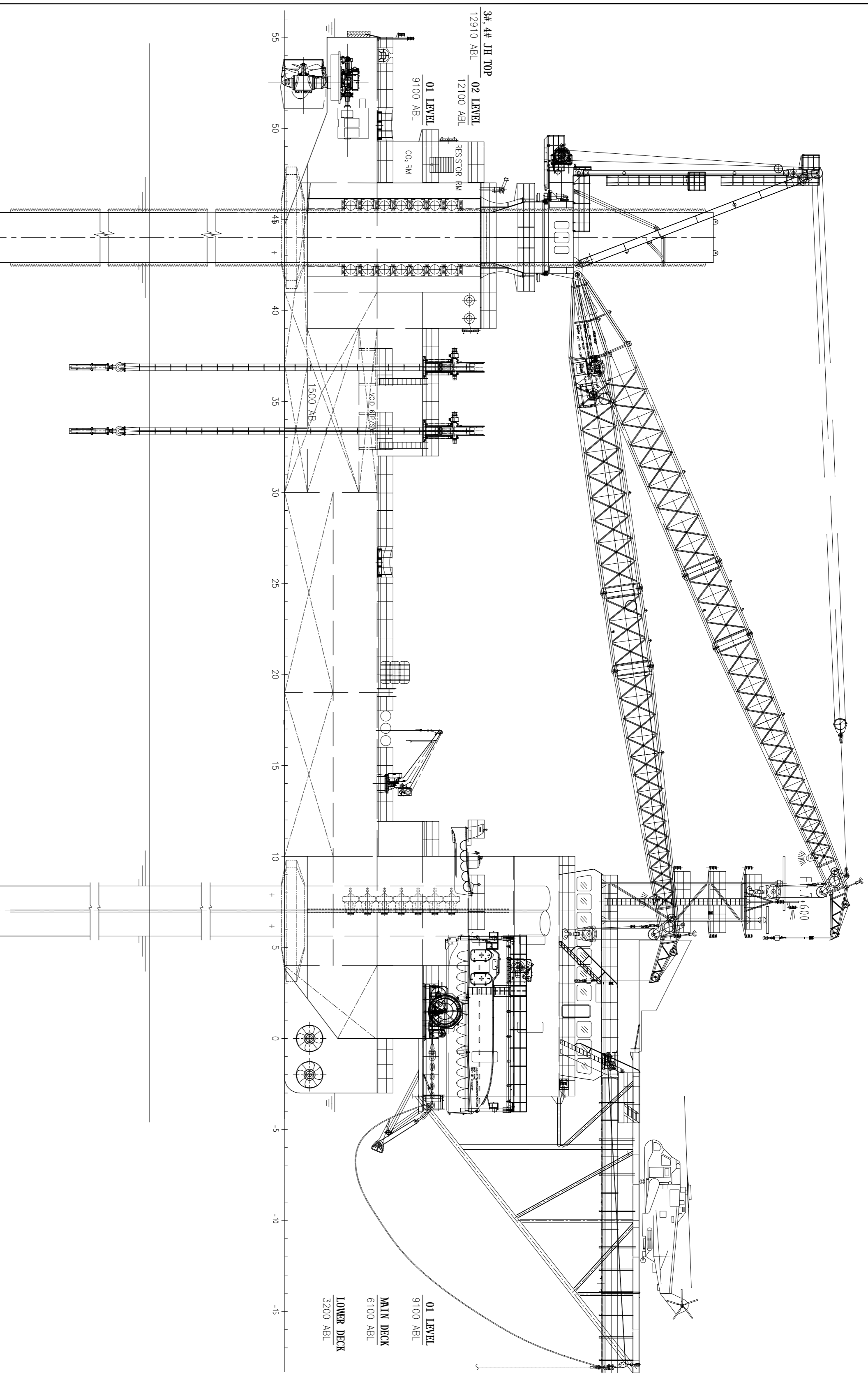
Life Saving / Rescue Equipment

SOLAS compliant on LSA Equipment
2 x Enclosed Lifeboat on each side

Helideck Facility

Helicopter Hosting Area Suitable for AugustaWestland 139 or Equivalent
D Value: 22m
T Value: 12.6 Ton
Compliance to CAP 437

日期	版本	标记	说明	设计	校对	审核
DATE	REV	MARK	DESCRIPTION	DESIGNED	CHECKED	AUDITED
2023.03.01	B	B1	Changed as per Owner requirement	Zhang YH	Chiu JD	Jia GX
2023.03.03	C	C1	Changed as per Owner requirement	Zhang YH	Chiu JD	Jia GX



DOUBLE BOTTOM

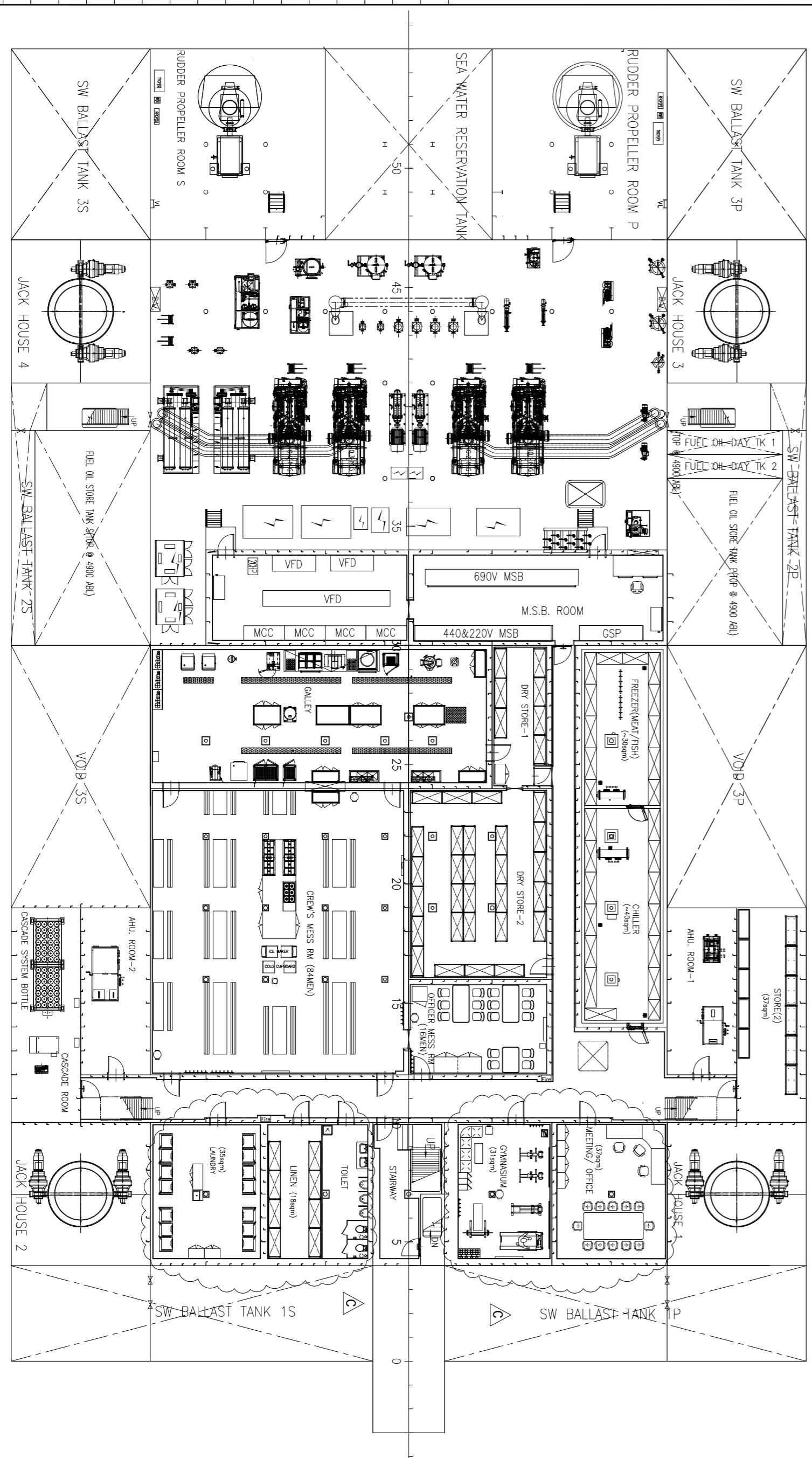
Description

Four-legged, Self-Elevating, Multi-purpose Unit.
 Class: ABS, A1 Self-Elevating Unit, Accommodation Service, HELDK, AMS, CRCOC-PL+, CPS, UNILD, RW, DPS-2, ACCU, PMP, ENWRO-OS, IDM-A, SMART(INF, SHW, MHW).
 Main dimension:
 Length overall abt: 92m
 Length 89.6 m
 Breadth 40.0 m
 Depth 6.1 m
 Design draft(max.) 3.3 m
 Max. Deck Allowable Load 5t/m²
 Free Deck Area 1500m²
 Variable load 1500T
 Accommodations 150 MEN

Operating conditions
 Normal operation 36m/s (70kt)
 Storm survival 51.5m/s (100kt)
 Crane operation 15.5m/s (30kt)

Jack-up Characteristics
 Legs O.D. 3.3m
 Leg total height(include spud can) 107 m
 Total jacking capacity 1540x4=6160t
 Lifting speed 1m/min

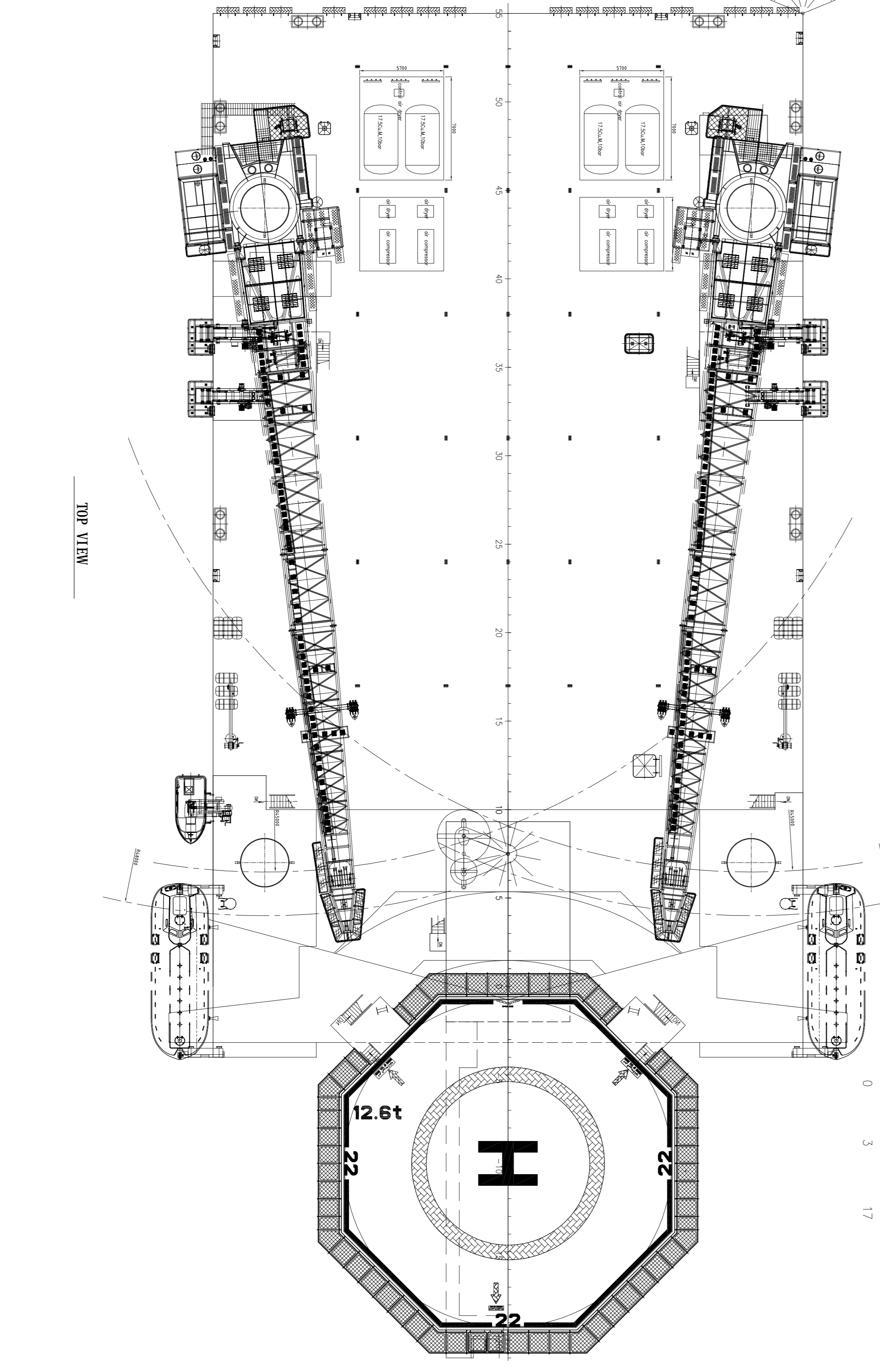
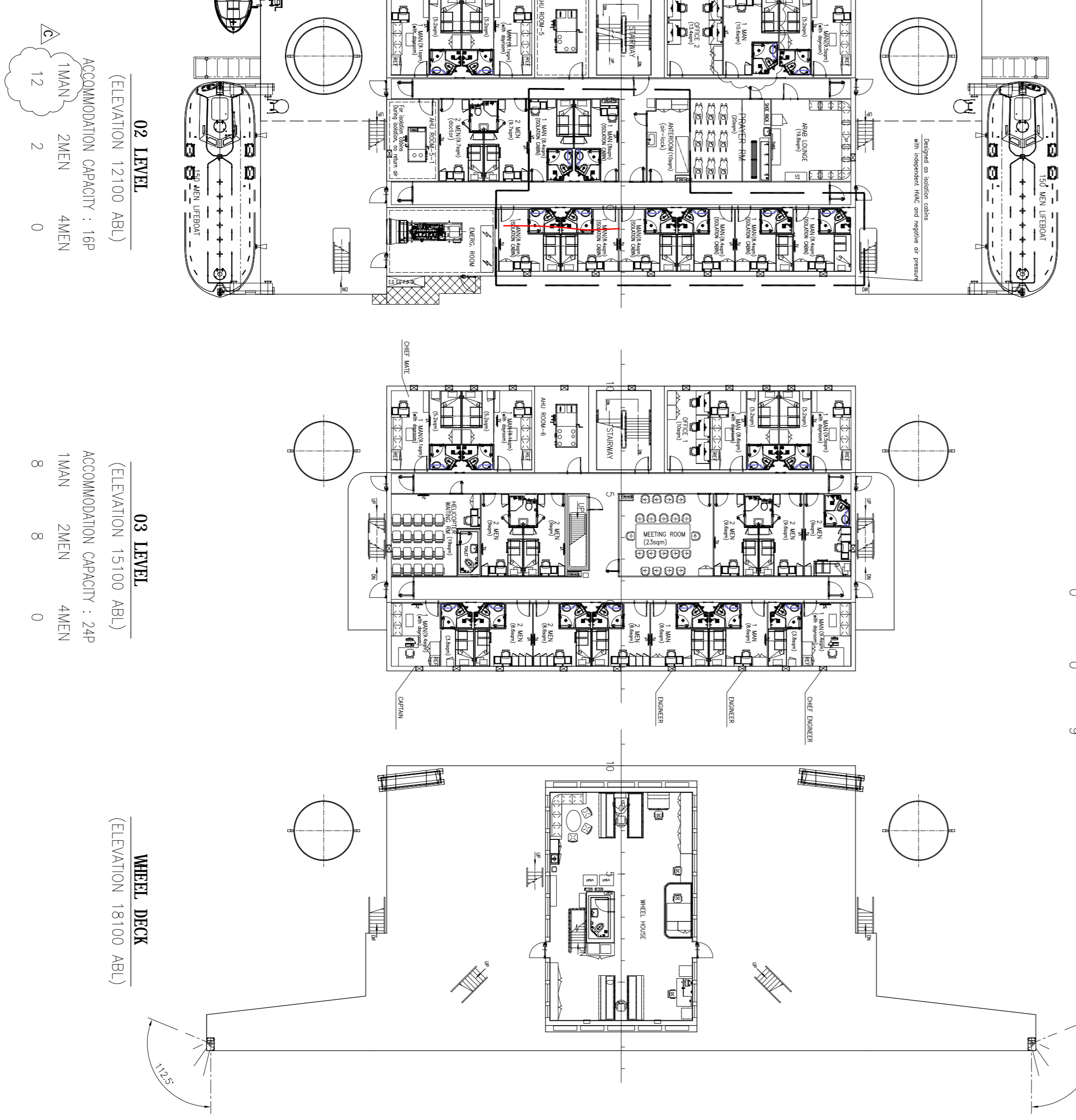
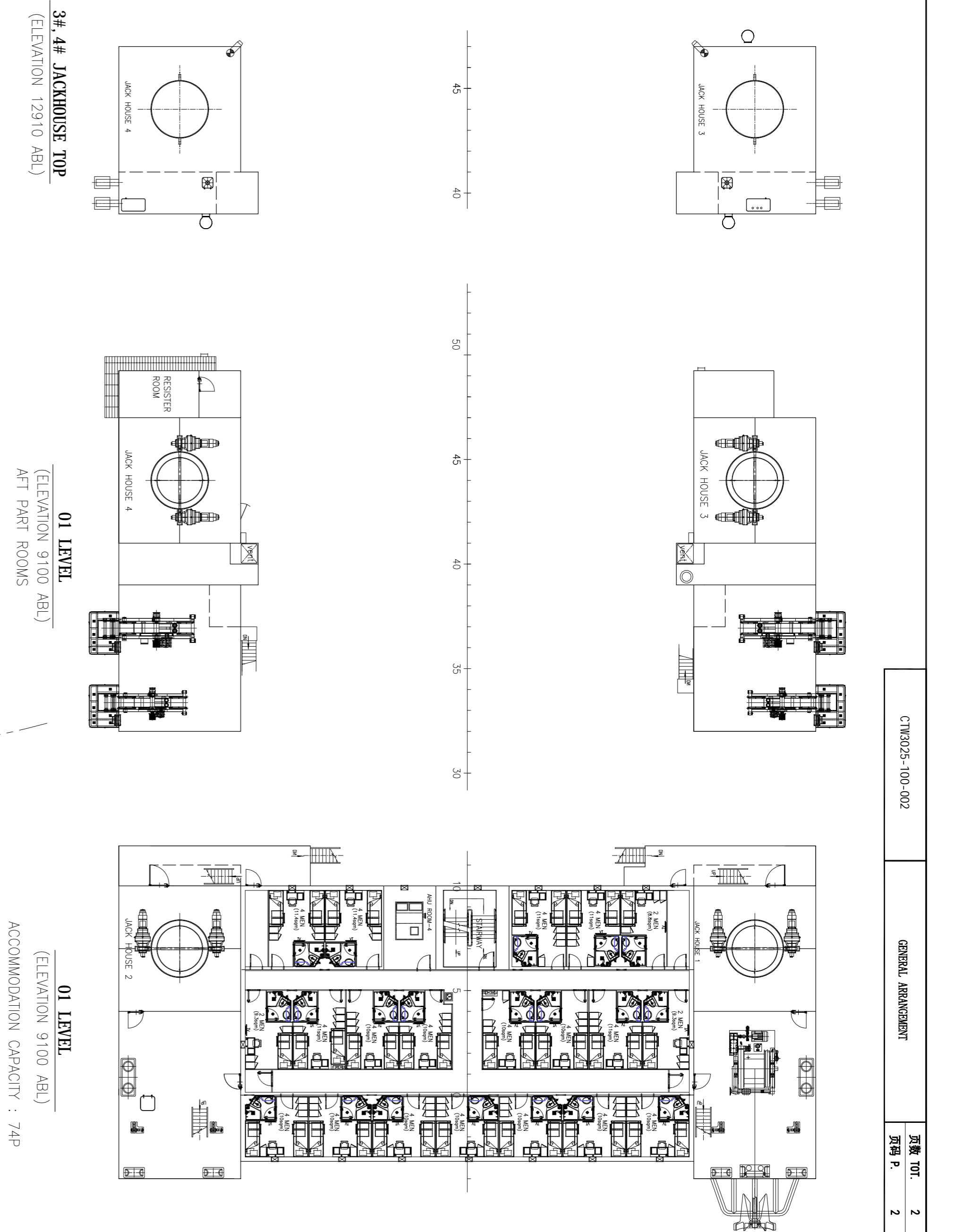
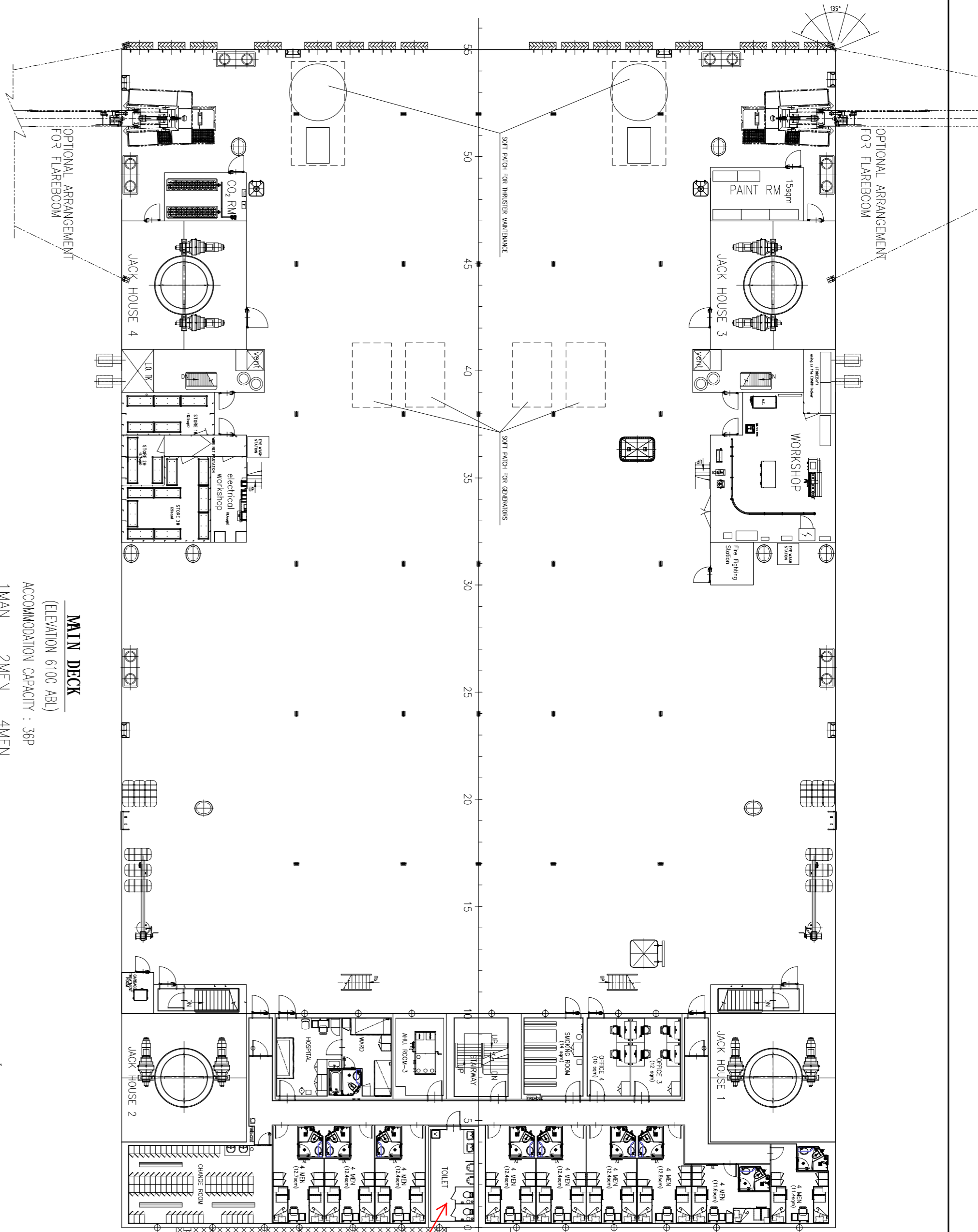
Azimuth Thruster 1800kW X2
 Bow Thruster 700kW X2
 Electric Power Station
 Main Diesel Generator 690V 60Hz 1700kW X4
 Emergency Generator 440V 60Hz 300kW
 Main crane capacity 2X200t @ R=10m(min),
 40t @ R=45m(max)
 AUX. HOOK, 10t @ R=48m(max)
 man-riding 2t @ R=48m(max)



LOWER DECK
(ELEVATION 3200 ABL)

- 接收名称
- 总体
- 结构
- 桩基
- 轮机
- 管系
- 通风
- 电气

编号	HALL NO.	图号	比例	设计	审核
350ft Self-Elevating Unit	HAZ/1615/1616	350ft Self-Elevating Unit	1:200	Zhang YH	Jia GX
GENERAL ARRANGEMENT					



投板名称
总体
结构
相架
轮机
管系
通风
电气