



RAWABI 609 Technical Specifications

MAIN PARTICULARS

Year Built: Newbuild
 Flag: Tuvalu
 Class: ABS
 Notation: ⚙️A1, Self-elevating Unit,
 (E) ⚙️AMS, CRC,

Accommodation Service, CPS,
 UWILD, HELID, PMP, ENVIRO,
 SMART (INF,SHM,MHM), IDM-A, or
 equivalent

Rawabi JUB 609 is a Jack up Barge
 with:

4 Cylindrical leg with Rack and
 Pinion jacking system

Clear Deck area of 1,500 m²

Deck Strength of 5 Ton/ m²

Variable Load of 1,500 Ton

Operating Water Depth from 5m @
 LAT to 65m max @ LAT)

Principle Dimensions

| | | | |
|---------------------|----------------------|-----------------|----------------------|
| Length Overall | abt 92.0 m | Breadth Moulded | 40.0 m |
| Length Barge | 66.0 m | Draft | 3.5 m |
| Depth Moulded | 6.10 m | Leg Length | 107 m |
| Leg Quantity & Type | 4, Cylindrical | Service Speed | 6 Knots |
| Operating Air Gap | 20 m | Deck Loading | 5 ton/m ² |
| Clear Deck Area | 1,500 m ² | Variable Load | 1,500 Ton |
| Deck Capacity | 750 Ton | | |

Capacity

| | |
|-------------|---------|
| Fuel Oil | 352 Ton |
| Fresh Water | 486 Ton |

MACHINERIES

Main Machinery

| | |
|---------------------------|--------------|
| Main Generator | 4 x 1,700 kW |
| Emergency Generator | 1 x 300 kW |
| Main Propulsion Thrusters | 2 x 1,800 kW |
| Tunnel Bow Thrusters | 2 x 700 kW |

Deck Machinery

| | |
|---------------------|--|
| Windlass | 1 x electro-hydraulic anchor windlass |
| Jacking System | Electric – Rack & Pinion |
| Jacking Speed | 3 Feet /min |
| Design Capacity | 4 x 14 Pinion, 6,160T |
| Main LEC Crane | 200 Ton at outreach of 10m and 40 Ton a t Maximum outreach of 45m |
| Secondary LEC Crane | 200 Ton at outreach of 10m and 40 Ton a t Maximum outreach of 45m |



RAWABI 609 Technical Specifications

EQUIPMENTS & ELECTRONICS

Navigation Equipment & Communication System

| | | | |
|---------------|---------|----------------------|----------------------|
| Gyro Compass | One (1) | GMDSS Area's | A1 & A2 |
| Radars | Two (2) | Fixed VHF Radios | Two (2) |
| Autopilot | One (1) | Hand-Held VHF Radios | Three (3) + chargers |
| Echo Sounder | One (1) | SSB | One (1) |
| GPS | One (1) | VSAT System | One (1) |
| Chart Plotter | One (1) | TV Sat Dome | One (1) |
| AIS | One (1) | Telephones | One (1) per room |
| | | Speed Doppler Log | One (1) |

CCTV

- Night Vision (Night Color Technology)
- Smart motion detection
- Covering all external decks, wheelhouse control station & engine room
- Covering each crane control room & crane boom

Accommodation

| | |
|-----------------------------|------------------|
| Total | 150 |
| Personnel Cabin Arrangement | |
| Single Berth Cabins | Eighteen (18) |
| Double Berth Cabins | Eighteen (18) |
| Four-man Cabins | Twenty Four (24) |

Accommodation Spaces

| | |
|-------------------------|---------|
| Foreman Office | One (1) |
| Barge Supervisor Office | One (1) |
| Deck Supervisor Office | One (1) |
| Deck Room | One (1) |
| Store Room | Two (2) |
| Locker Room | One (1) |
| Arab Lounge | One (1) |
| Mess Room | One (1) |
| Laundry | One (1) |
| Paint Locker Room | One (1) |

Fire Fighting / Extinguishing System

Internal

SOLAS compliant fixed Fire Fighting System
H2S and Hydrocarbon Vapor Sensors covering the entire vessel's exterior (5 points)

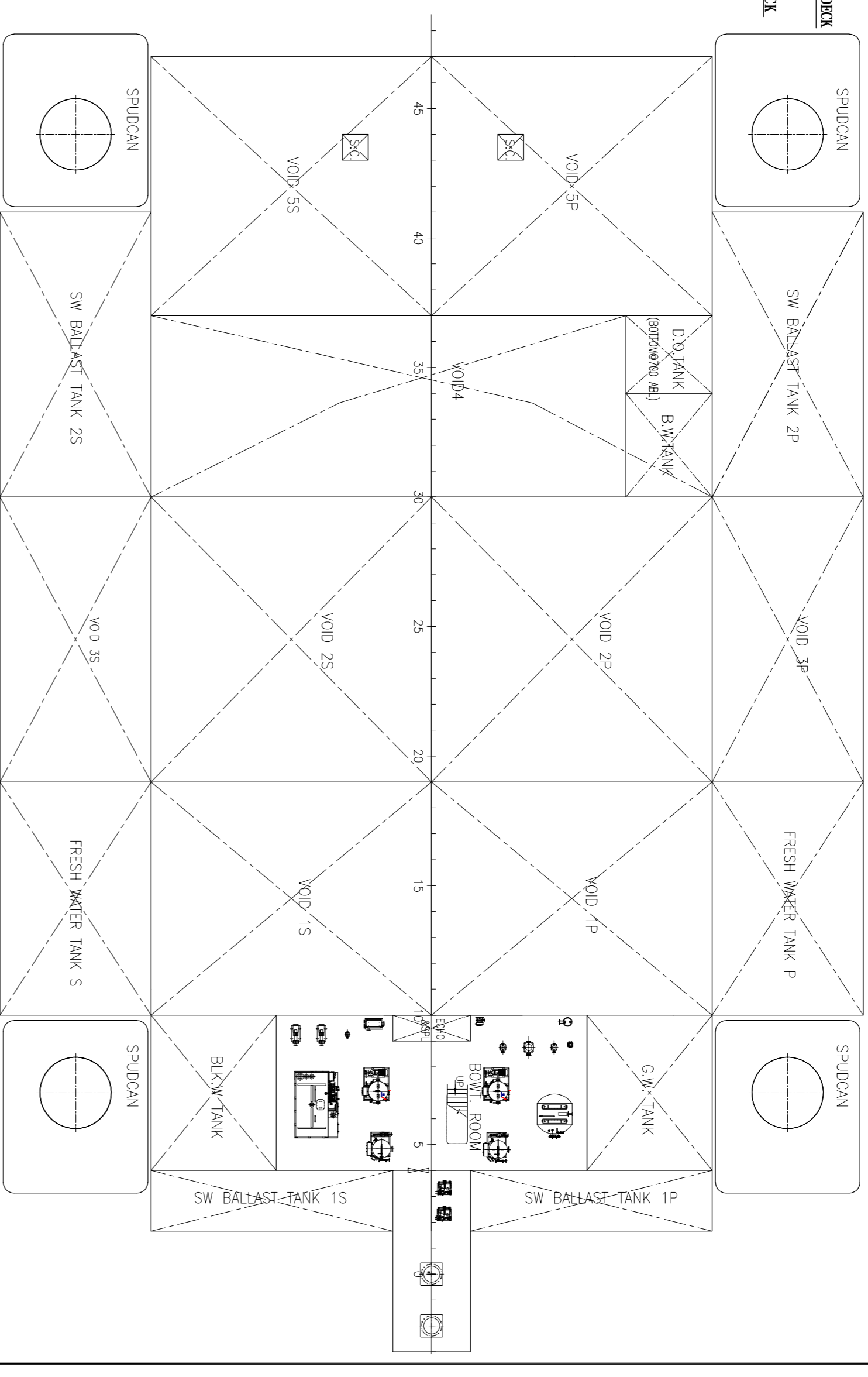
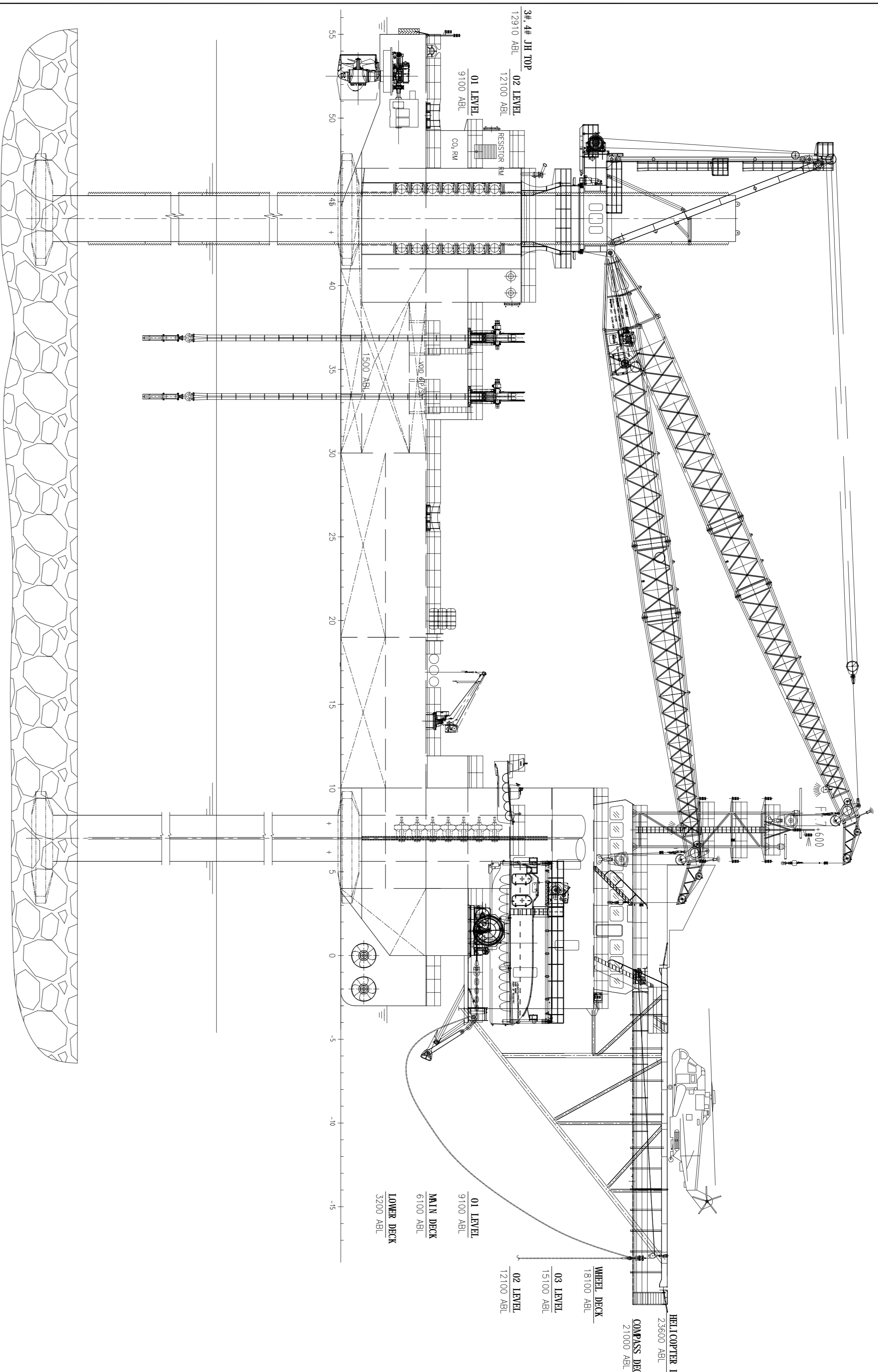
Life Saving / Rescue Equipment

SOLAS compliant on LSA Equipment
2 x Enclosed Lifeboat on each side

Helideck Facility

Helicopter Hosting Area Suitable for AugustaWestland 139 or Equivalent
D Value: 22m
T Value: 12.6 Ton
Compliance to CAP 437

| 日期 | 版本 | 标记 | 说明 | 设计 | 校对 | 审核 |
|------------|-----|------|----------------------------------|----------|---------|---------|
| DATE | REV | MARK | DESCRIPTION | DESIGNED | CHECKED | AUDITED |
| 2023.03.01 | B | B1 | Changed as per Owner requirement | Zhang YH | Chiu JD | Jia GX |
| 2023.03.03 | C | C1 | Changed as per Owner requirement | Zhang YH | Chiu JD | Jia GX |



DOUBLE BOTTOM

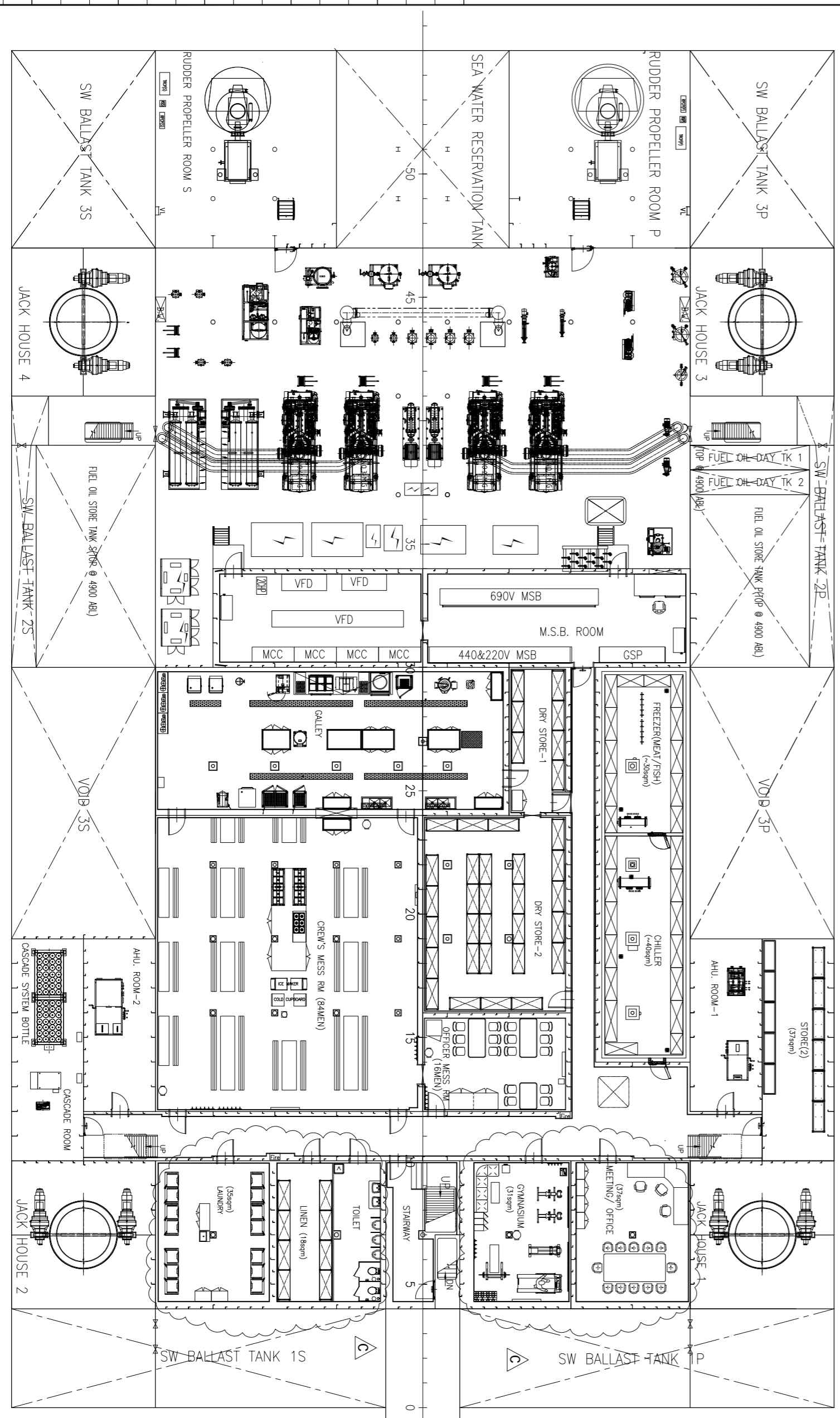
Description

Four-legged, Self-Elevating, Multi-purpose Unit.
 Class: ABS, **CS** A1 Self-Elevating Unit, Accommodation Service, HELDK, **SA** AMS, CRCOC-PL+, CPS, UMILD, RW, DPS-2, ACCU, PMP, ENWRO-OS, IDM-A, SMART(INF, SHW, MHW).
 Main dimension:
 Length overall 92m
 Length 89.6 m
 Breadth 40.0 m
 Depth 6.1 m
 Design draft(max.) 3.3 m
 Max. Deck Allowable Load 5t/m²
 Free Deck Area 1500m²
 Variable load 1500T
 Accommodations 150 MEN

Operating conditions
 Normal operation 36m/s (70kt)
 Storm survival 51.5m/s (100kt)
 Crane operation 15.5m/s (30kt)

Jack-up Characteristics
 Legs O.D. 3.3m
 Leg total height(include spud can) 107 m
 Total jacking capacity 1540x4=6160t
 Lifting speed 1m/min

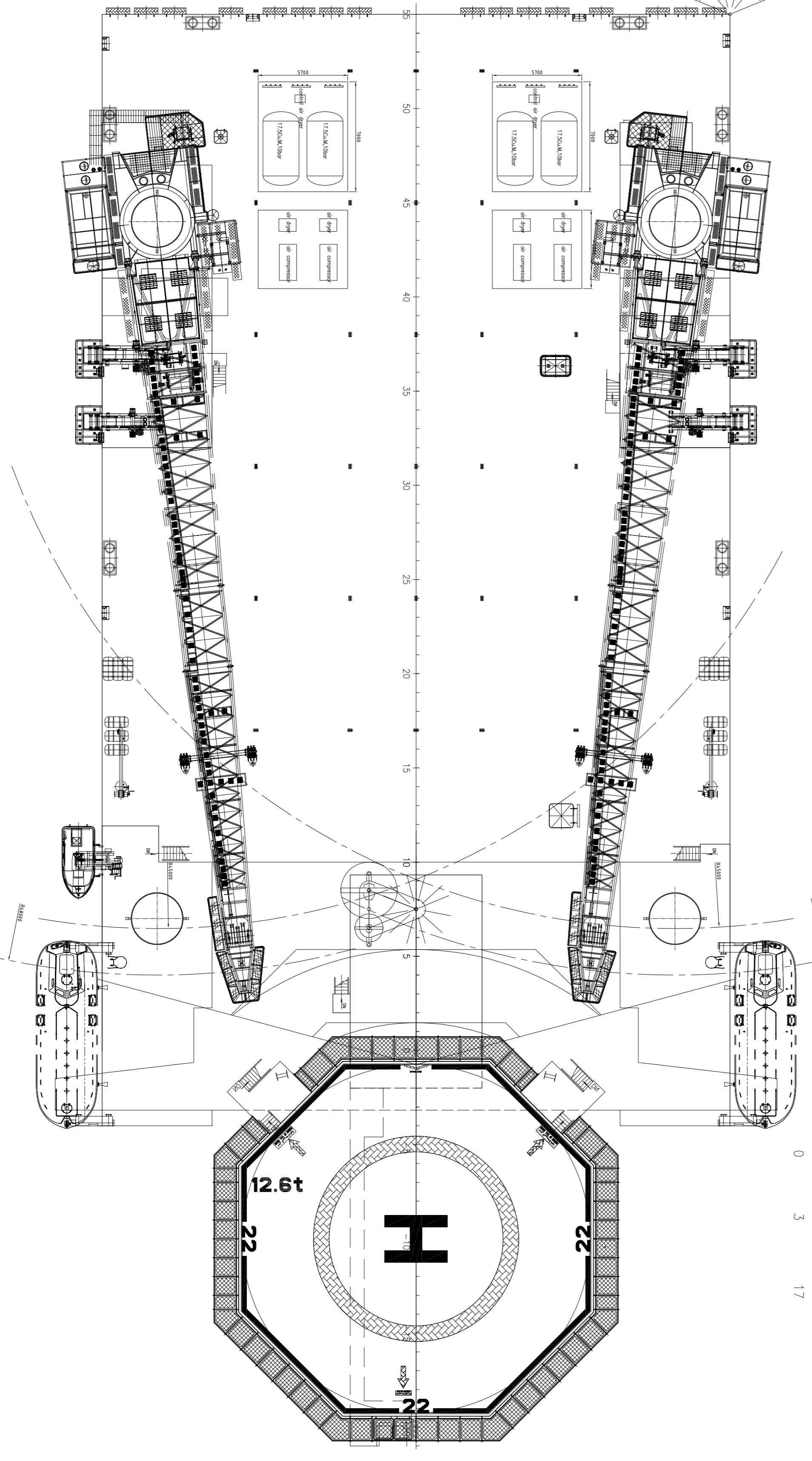
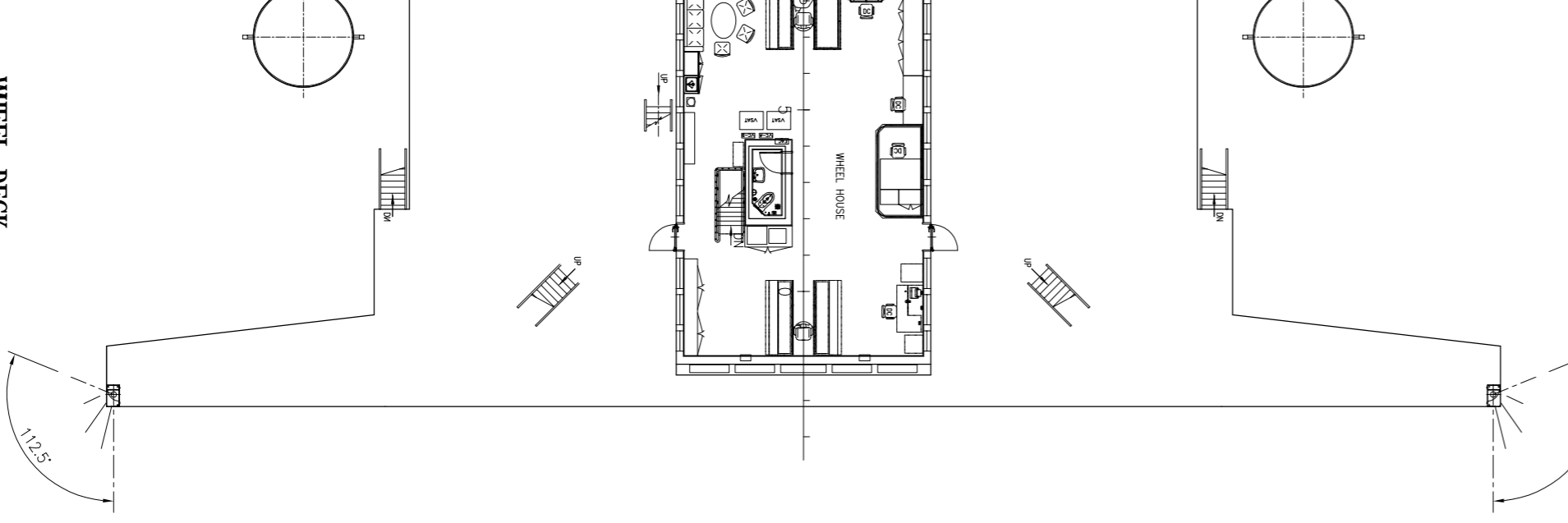
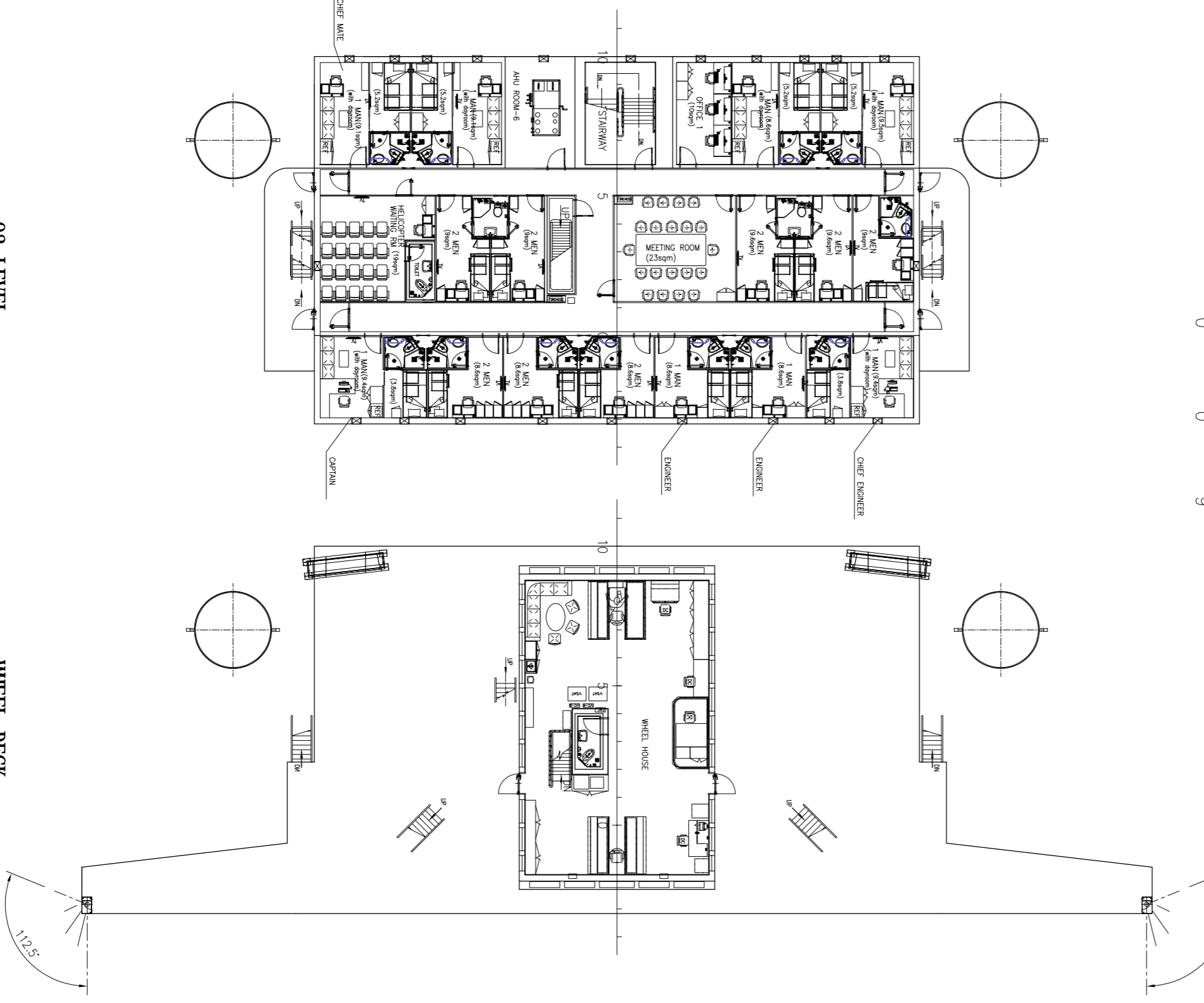
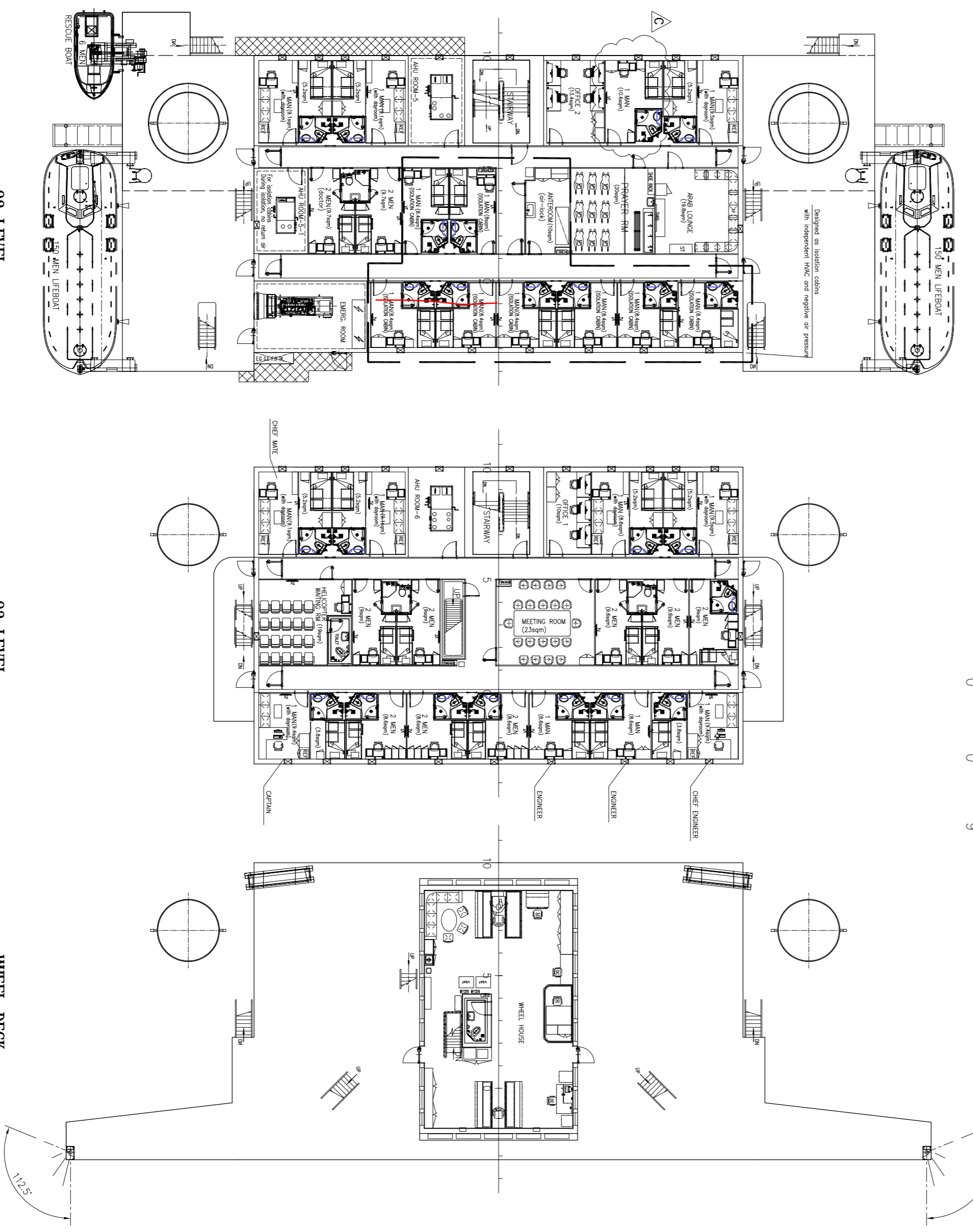
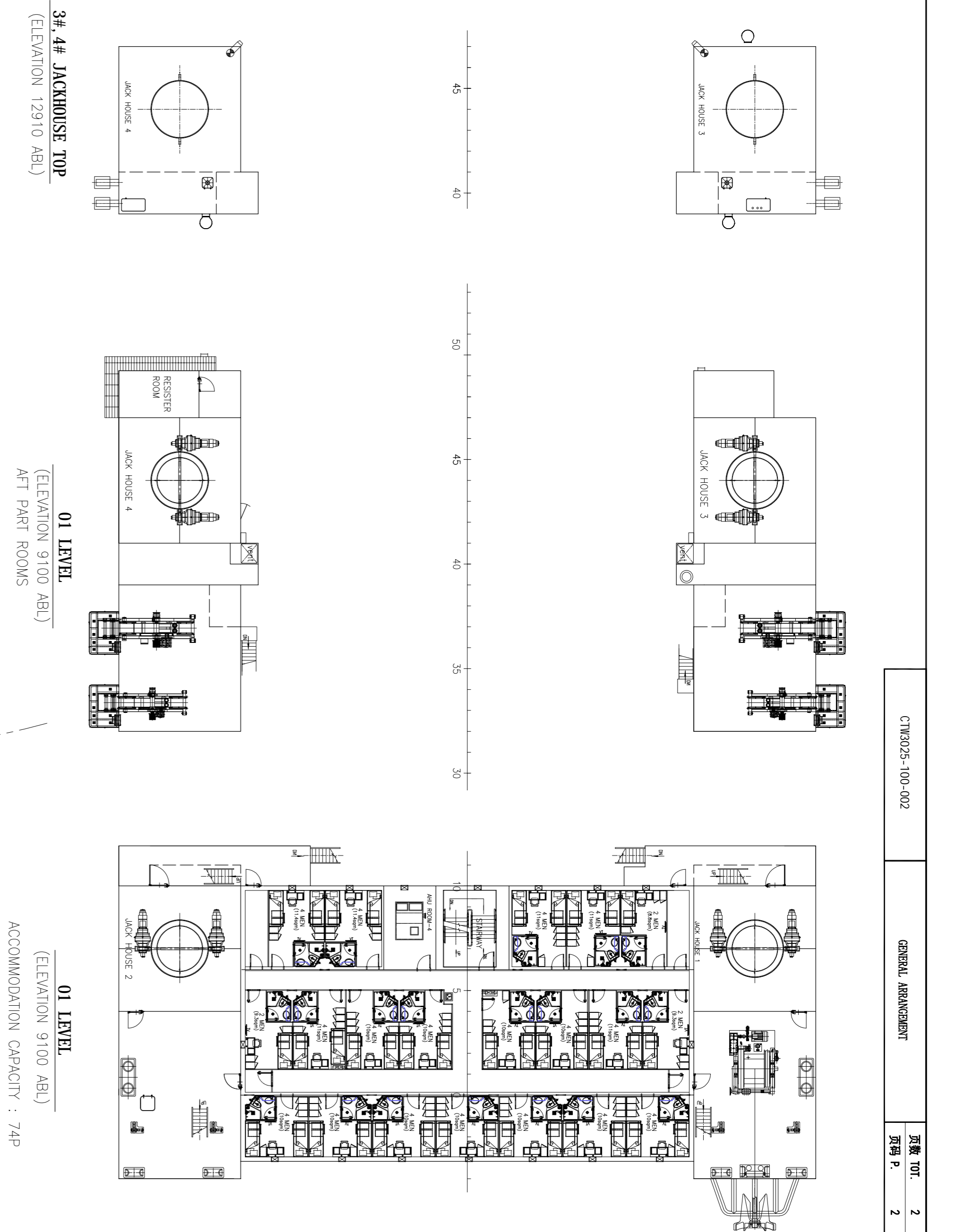
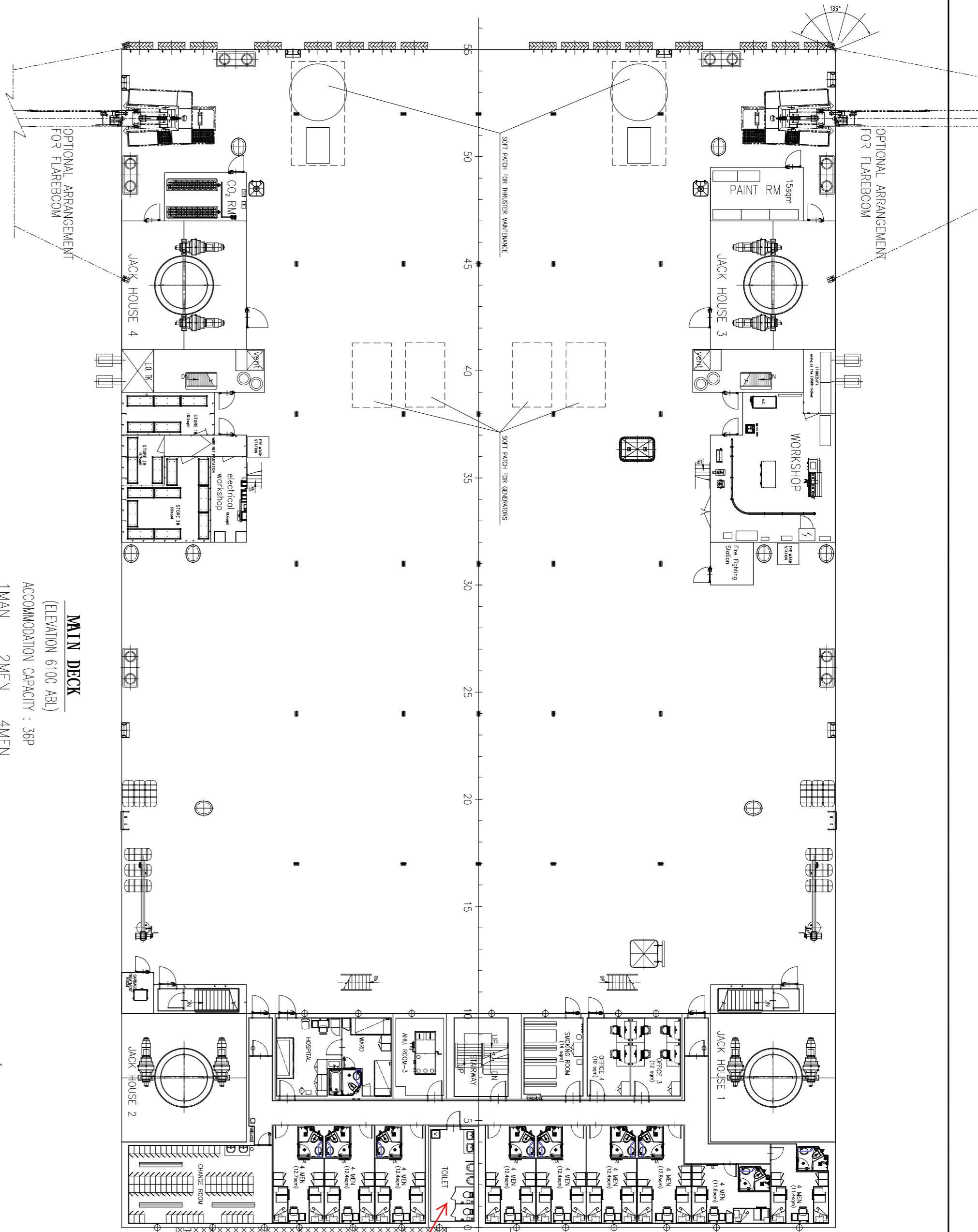
Azimuth Thruster 1800kW X2
 Bow Thruster 700kW X2
 Electric Power Station
 Main Diesel Generator 690V 60Hz 1700kW X4
 Emergency Generator 440V 60Hz 300kW
 Main crane capacity 2X200t @ R=10m(min),
 40t @ R=45m(max)
 AUX. HOOK. 10t @ R=48m(max)
 man-riding 2t @ R=48m(max)



LOWER DECK
(ELEVATION 3200 ABL)

- 接收名称
- 总体
- 结构
- 桩基
- 轮机
- 管系
- 通风
- 电气

| 编号 | HALL NO. | 日期 | 说明 | 详细设计 |
|-----|----------|------------|---------------------------|---------------|
| REV | NO. | DATE | DESCRIPTION | DETAIL DESIGN |
| 1 | 1 | 2023.03.03 | 350ft Self-Elevating Unit | 1:200 |
| 2 | 2 | 2023.03.03 | GENERAL ARRANGEMENT | 2 |
| 3 | 3 | 2023.03.03 | | 1 |
| 4 | 4 | 2023.03.03 | | 0 |



电气

通风

管系

轮机

船架

结构

总称

投板名称