

CARACAL PIONEER Technical Specifications



Specifications

Length Overall:	57.00m
Beam Moulded:	44.00m
Depth Moulded:	6.858m
Draft Moulded:	3.361m
Leg Length:	97.54m
Leg Diameter:	3.048m
Maximum Water Depth:	65m
Gross Tonnage:	5097MT



CARACAL PIONEER

Technical Specifications

GENERAL

Port of Registry/Flag	Singapore
Official Number	395647
Class	ABS
Notation	+ A1, Self Elevating Unit, +AMS
Built	2010, Saigon Shipyard Co., Ltd, Vietnam

ADDITIONAL FEATURES

Speed	Approx 6 knots
Helideck Rated	Suitable for Sikorsky S62 and S92 Helicopter
Azimuth Propulsion	3xAzimuth thusters, 1100kW @ 690V/3Ph/60HZ
Bow Thruster	1xtransverse FPP bow thruster, 440kw@690V/3PH/60 Hz
Electric Power Generator	4xCaterpillar model 3516B 12 cylinder, 1383kW@1200rpm
Emergency Generator	1xCaterpillar model C4.4, 98kW@1800rpm

Auxilliary Generator 1xCaterpillar C18 rated 400kW@1800rpm

Self-elevating Power Units 9x300HP hydraulic motor, three for each leg coupled to variable displacment pressure compensated pumps

Self-elevating Gear Units 54 pinion drive gears units per liftboat, each gear 72.7MT lifting capacities

Steering System Electric/hydraulic steering, with 2 stations

Fuel Oil Tank Capacity 462MT

Water Tank Capacity 550MT

Accomodation 160 Men accommodation including marine crew

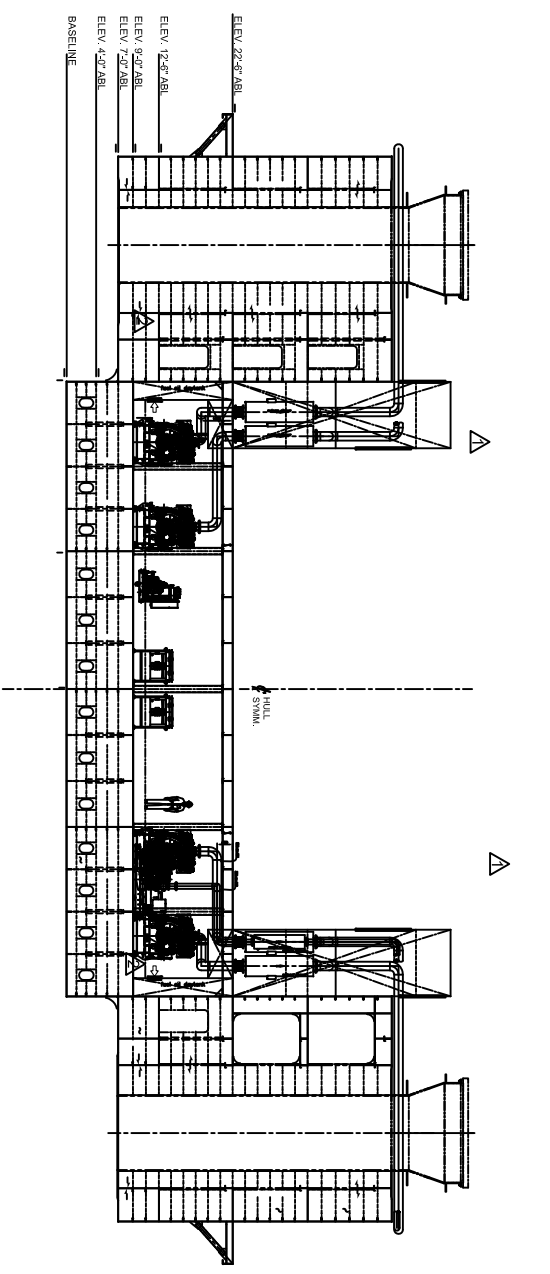
Ancillary Equipment Port Crane Max. 181 MT at 9.1M reach
Stbd Crane Max. 181 MT at 9.1M reach

Variable Load 837MT

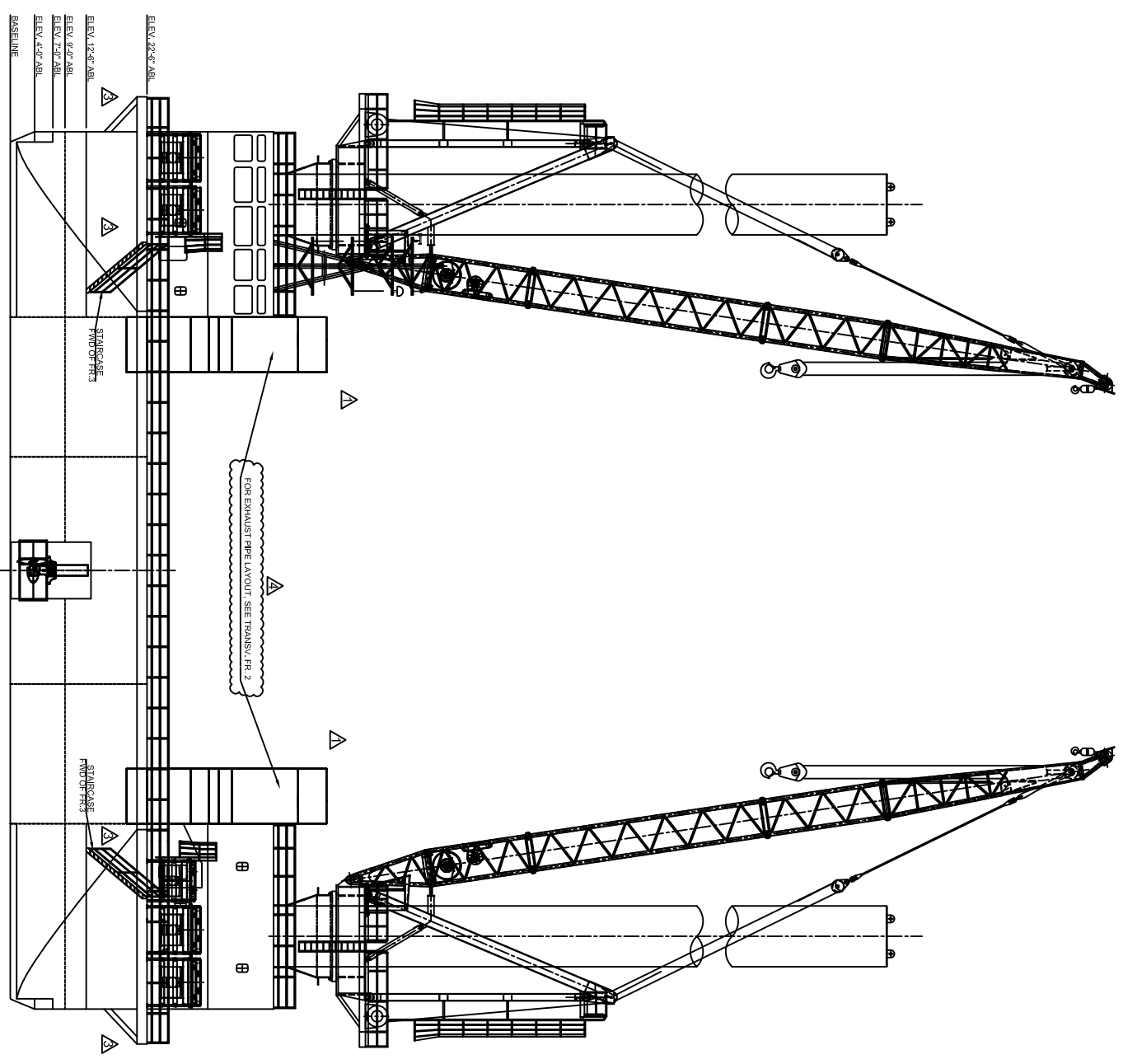
Deck Space Approx 11,000 ft²

** This vessel specification is given in good faith & assumed to be correct. Details given are without guarantee.

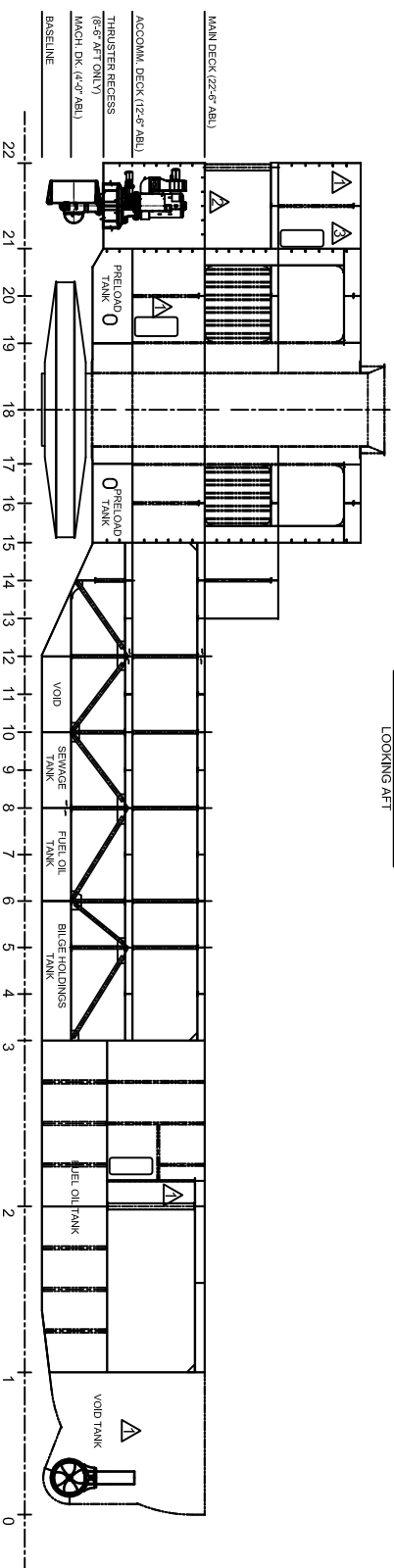
** Owners reserved the right to amend the specifications without notification.



TRANSVERSE ELEVATION AT FR. 2
LOOKING AFT



BOW ELEVATION
LOOKING AFT



LONGITUDINAL ELEVATION AT CENTERLINE
LOOKING PORT

BASIC DESIGNER IS TO CHECK
IMPACT OF THESE AMENDMENTS
ON PERFORMANCE AND CONCUR.

NAVAUTITIK PTE LTD
MARINE SURVEYORS,
540 SIS AMBUE CORNER
SINGAPORE 387803
TEL: +65 67417220
FAX: +65 67417219
Email: navautitik@navautitik.com or navautitik@navautitik.com.sg

Name	Levingston
Title	
Date Approved	
Final Approval	
Final Submittal	
Second Submittal	
First Submittal	
Draft Submittal	
Submitted By	Date Submitted
Approved By	Date Approved
Approval Block	Review Reference/Disposition

THE LEVINGSTON Corp.

Contract: E320 LFTBOAT
SSY-0702 & SSY-0703

Drawing Title: GENERAL ARRANGEMENT
ELEVATION VIEWS

Scale: 1:150
Drawing Number: E320-101-02
Revision: 4

Drawn By: JAO-V-ROD
Checked By: B.DIAB
Approved By:

Date	Rev.	Approval	Description	Area
12/23/07	P	ISSUED FOR APPROVAL		
04/13/08	R	GENERAL REVISION		
06/19/08	S	REVISED AS SHOWN		
25 July'08	0	APPROVED FOR CONSTR.		
11 Aug'08	1	AMENDED AS PER YARD'S COMMENTS AT MILESTONE 0703		
14 Aug'08	2	AMENDED AS PER YARD'S COMMENTS AT MILESTONE 0702		
9 Sept'08	3	AMENDED AS PER YARD'S COMMENTS & DESIGN PROGRESS		

These drawings, design, concept, rights, and specifications are the intellectual property of The Levingston Corporation and contains information proprietary to this entity. This information is furnished with the expressed understanding that the recipient recognizes the proprietary nature of this information and will not copy or alter it in any manner, nor transfer it, use it for manufacturing, sell it, or use it in any way, to the detriment of The Levingston Corporation. The recipient shall not disclose the information herein to any other party except for the purpose contracted for with The Levingston Corporation. These drawings are copyrighted under the laws of the United States of America and other related international treaties.