



# HAMAD EAGLE

## Technical Specifications

### Main Particulars

LENGTH OVERALL	137.5 ft	41.9 m
BEAM OVERALL	98.0 ft	29.9 m
DEPTH	13.0 ft	4.0 m
LIGHT DRAFT	8.50 ft	2.59 m
TONNAGE (US) GRT	196	
TONNAGE (ITC) GRT	1,313	
TONNAGE (ITC) NRT	393	

### Cargo Deck

STRENGTH	540.0 Lb/ft <sup>2</sup>	2.6 Mt/m <sup>2</sup>
CLEAR AREA	8,400.0 ft <sup>2</sup>	780.4 m <sup>2</sup>

### Capacities

FUEL OIL	32,380 USG	123 m <sup>3</sup>
POTABLE WATER	21,030 USG	80 m <sup>3</sup>

### Machinery

MAIN ENGINES	2x Caterpillar 3512 @1500hp
MAIN GENERATORS	2 x Caterpillar C9-215 kW@480v
AUX. GENERATOR	1 x John Deere 6068- 99 kW@480v
BOW THRUSTER #1	Yes
PROPELLERS	2x Workboat

### Crane Capabilities

MAX SWL	175Tons
CRANE #1	Port crane: 175Tons w/ 115' boom: Heel pin 14' above deck
CRANE #2	STBD crane: 50Tons w/ 50'-70" Telescopic boom
CRANE #3	STBD Aft: 25tons w/ 70' boom

### Jacking

LEG CONFIGURATION	3	
JACK MAXIMUM LOAD	384.00 Lt	390.16 Mt
PAD DIMENSIONS	40'(L) and 16'(W) and 4'(Depth)	
PAD CONFIGURATION	Raked at both ends	
MAX WORKING DEPTH	180.00 ft	54.86 m
MAX SEPARATION	225.00	68.58

### Performance

MAXIMUM SPEED	7.0 Knots
---------------	-----------

### Accommodation

BERTHS	48
CREW CAPACITY	8
PASSENGERS	40
SPECIAL PERSONNEL	2

### Special Features

ALL ACCOMMODATION AREAS INCLUDING NAVIGATIONAL BRIDGE ARE PROTECTED BY HYGENSEA HYDROXYL GENERATORS TO ELIMINATE AEROSOLIZED BACTERIA, VIRUS AND SPORES.

### Electronics & Controls

DP REFERENCE #1	GPS, DGPS
RADAR #1	Furuno
RADIOS	Fully Equipped
GMDSS	Fully Equipped
AIS	Fully Equipped
DEPTH SOUNDER	Fully Equipped
NAVTEX	Fully Equipped
IRIDIUM IOP	Fully Equipped
VSAT BROADBAND	Fully Equipped

### Documentation

CLASS	ABS
CLASS ID	07171534
FLAG	MARSHALL ISLANDS
USCG	INSPECTED
OFFICIAL NUMBER	1196599
IMO	8768995
CALL SIGN	WDG 9999
MMSI NUMBER	367593360
BUILD YEAR	2007
BUILDER	BOLLINGER SHIPYARD
HULL NUMBER	515

T1-8F-4 RAKEZ Amenity Center, Al Hamra Industrial Zone-FZ,  
Ras Al Khaimah, United Arab Emirates, PO Box 85631  
Email: [info@gpkmms.com](mailto:info@gpkmms.com) Website: <http://www.gpkmms.com>



# HAMAD EAGLE

## Technical Specifications

**PORT CRANE - ENERGY CRANES - MODEL EC1100**

WORKING RADIUS	BOOM ANGLE (DEG)	MAIN HOIST					AUXILIARY HOIST		
		EIGHT (8) PART REEVING		SIX (6) PART REEVING		PERSONNEL RATED CAPACITY (LBS)	TWO (2) PART REEVING		PERSONNEL RATED CAPACITY (LBS)
		ONBOARD CAPACITY (LBS)	OFFBOARD CAPACITY (LBS)	ONBOARD CAPACITY (LBS)	OFFBOARD CAPACITY (LBS)		ONBOARD CAPACITY (LBS)	OFFBOARD CAPACITY (LBS)	
22.1	82	345,480	229,965	263,055	229,965	20,000	18,115	18,115	5,539
25	80.5	345,480	229,965	263,055	229,965	20,000	18,115	18,115	5,539
30	77.8	345,480	229,965	263,055	229,965	20,000	18,115	18,115	5,539
35	75.1	306,280	202,085	263,055	202,085	20,000	18,115	18,115	5,539
40	72.4	283,885	187,190	263,055	187,190	20,000	18,115	18,115	5,539
45	69.6	240,940	158,635	240,940	158,635	20,000	18,115	18,115	5,539
50	66.8	215,115	141,485	215,155	141,485	20,000	18,115	18,115	5,539
55	63.9	193,905	127,355	193,905	127,355	20,000	18,115	18,115	5,539
60	60.9	176,085	115,505	176,085	115,505	20,000	18,115	18,115	5,539
65	57.9	160,935	105,430	160,935	105,430	20,000	18,115	18,115	5,539
70	54.7	147,890	96,755	147,890	96,755	20,000	18,115	18,115	5,539
75	51.4	136,540	89,205	136,540	89,205	20,000	18,115	18,115	5,539
80	48	126,575	82,580	126,575	82,580	20,000	18,115	18,115	5,539
85	44.3	117,760	76,720	117,760	76,720	20,000	18,115	18,115	5,539
90	40.3	109,905	71,495	109,905	71,495	20,000	18,115	18,115	5,539
95	36	102,860	66,810	102,860	66,810	20,000	18,115	18,115	5,539
100	31.2	96,505	62,585	96,505	62,585	20,000	18,115	18,115	5,539
105	25.6	90,745	58,755	90,745	58,755	20,000	18,115	18,115	5,539
110	18.3	85,500	55,265	85,500	55,265	20,000	18,115	18,115	5,539
115	0	55,855	35,550	55,855	35,550	20,000	18,115	18,115	5,539

THE ABOVE RATINGS HAVE BEEN REDUCED FROM THE MAXIMUM CRANE RATINGS TO ACCOUNT FOR THE WEIGHT OF THE HOOK & BLOCK AS REQUIRED BY AFI 6TH EDITION  
 THE ABOVE PERSONNEL RATINGS ARE BASED ON API 2C 6TH EDITION.

DYNAMIC LOADS BASED ON THE STANDARD C OF 2.0, UNLESS OTHERWISE STATED USE ONBOARD REEVED CAPACITIES FOR LIFTING FROM OR LANDING ON THE PLATFORM. USE OFFBOARD REEVED CAPACITIES FOR LIFTING FROM OR LANDING ON FLOATING VESSELS.

WARNING : OPERATION OF THIS EQUIPMENT BY PERSONNEL NOT QUALIFIED IS STRICTLY PROHIBITED ENERGY CRANES

MAIN HOIST RIGGING INFORMATION	AUXILIARY HOIST RIGGING INFORMATION	BOOM HOIST RIGGING INFORMATION	BASIS OF STRUCTURAL RATING
<b>WIRE ROPE</b>	<b>WIRE ROPE</b>	<b>WIRE ROPE</b>	<b>DYNAMIC CONDITIONS</b>
1.375 (IN) DIAMETER	0.75 (IN) DIAMETER	1 (IN) DIAMETER	2 (CB) DYNAMIC COEFFICIENT
2,050 (FT) LENGTH	600 (FT) LENGTH	1,120 (FT) LENGTH	DEFAULT DYNAMIC METHOD
<b>DYFORM-34LR2160 CONSTRUCTION</b>	<b>DYFORM-18 CONSTRUCTION</b>	<b>CONSTRUCTEX CONSTRUCTION</b>	<b>PEDESTAL REACTIONS</b>
123.65 (TONS) BREAKING STRENGTH	32.2 (TONS) BREAKING STRENGTH	62.5 (TONS) BREAKING STRENGTH	23,139,690 (FT-LBF) MAXIMUM MOMENT
25.9 (FPM) EIGHT (8) PART REEVING MAXIMUM AVAILABLE HOOK SPEED @ SUPPLY BOAT	75 (FPM) TWO (2) PART REEVING MAXIMUM AVAILABLE HOOK SPEED @ SUPPLY BOAT		670,978 (LBF) CORRESPONDING THRUST
220 (FT) MAXIMUM HOOK DROP	210 (FT) MAXIMUM HOOK DROP		
<b>LOAD BLOCK</b>	<b>OVERHAUL BALL / LOAD BLOCK</b>	<b>PENDANT LINES</b>	<b>STANDARD OPERATING CONDITIONS</b>
175 (TONS) STATIC LOAD RATING	15 (TONS) STATIC LOAD RATING	2.375 (IN) DIAMETER	N/A (FT) WAVE HEIGHT
116.7 (TONS) DYNAMIC LOAD RATING	10.0 (TONS) DYNAMIC LOAD RATING	55 (FT) LENGTH	N/A (MPH) WIND SPEED
58 (TONS) PERSONNEL RATING	5.0 (TONS) PERSONNEL RATING	6 X 37 IWRC EEIPS CONSTRUCTION	883,969 (FT-LBF) MAXIMUM MOMENT
		300 (TONS) BREAKING STRENGTH	21,800,320 (LBF) CORRESPONDING THRUST

PART NUMBER: 4LRC-0681  
 SERIAL NUMBER: 0603

*T1-8F-4 RAKEZ Amenity Center, Al Hamra Industrial Zone-FZ,  
 Ras Al Khaimah, United Arab Emirates, PO Box 85631  
 Email: [info@gpkmms.com](mailto:info@gpkmms.com) Website: <http://www.gpkmms.com>*



STBD FWD - ENERGY CRANES - MODEL EC65T

WORKING RADIUS	BOOM ANGLE (DEG)	MAIN HOIST - SIX (6) PART REEVING					AUXILIARY HOIST - ANY POSITION			
		RETRACTED		BOOM ANGLE (DEG)	EXTENDED		PERSONNEL RATED CAPACITY (LBS)	SINGLE (1) PART REEVING		PERSONNEL RATED CAPACITY (LBS)
		ONBOARD CAPACITY (LBS)	OFFBOARD CAPACITY (LBS)		ONBOARD CAPACITY (LBS)	OFFBOARD CAPACITY (LBS)		ONBOARD CAPACITY (LBS)	OFFBOARD CAPACITY (LBS)	
11	80	100,000	65,000					6,000	6,000	1,840
15	74	100,000	65,000	79	54,435	34,730	6,180	6,000	6,000	1,840
20	69	84,885	55,980	75	47,525	31,135	6,180	6,000	6,000	1,840
25	62	70,495	46,410	70	42,205	27,595	6,180	6,000	6,000	1,840
30	55	57,190	37,565	66	37,935	24,760	6,180	6,000	6,000	1,840
35	48	47,555	31,155	61	34,480	22,460	6,180	6,000	6,000	1,840
40	39	40,255	26,300	57	31,565	20,525	6,180	6,000	6,000	1,840
45	28	34,525	22,490	51	29,155	18,920	6,180	6,000	6,000	1,840
50	0	29,905	19,415	46	27,120	17,565	6,180	6,000	6,000	1,840
55				40	25,380	16,405	6,180	6,000	6,000	1,840
60				32	23,890	15,420	6,180	6,000	6,000	1,840
65				23	21,280	13,680	6,180	6,000	6,000	1,840
70				0	18,960	12,140	6,180	6,000	6,000	1,840

THE ABOVE RATINGS HAVE BEEN REDUCED FROM THE MAXIMUM CRANE RATINGS TO ACCOUNT FOR THE WEIGHT OF THE HOOK & BLOCK AS REQUIRED BY API 6TH EDITION  
THE ABOVE PERSONNEL RATINGS ARE BASED ON API 2C 6TH EDITION.

DYNAMIC LOADS BASED ON THE STANDARD C OF 2.0, UNLESS OTHERWISE STATED USE ONBOARD REEVED CAPACITIES FOR LIFTING FROM OR LANDING ON THE PLATFORM. USE OFFBOARD REEVED CAPACITIES FOR LIFTING FROM OR LANDING ON FLOATING VESSELS.

WARNING : OPERATION OF THIS EQUIPMENT BY PERSONNEL NOT QUALIFIED IS STRICTLY PROHIBITED ENERGY CRANES

MAIN HOIST RIGGING INFORMATION	AUXILIARY HOIST RIGGING INFORMATION	BASIS OF STRUCTURAL RATING	
<b>WIRE ROPE</b>	<b>WIRE ROPE</b>	<b>DYNAMIC CONDITIONS</b>	
0.875 (IN) DIAMETER	0.5625 (IN) DIAMETER	2 (CB) DYNAMIC COEFFICIENT	
1,295 (FT) LENGTH	310 (FT) LENGTH	DEFAULT DYNAMIC METHOD	
<b>DYFORM-18 CONSTRUCTION</b>	<b>DYFORM-18 CONSTRUCTION</b>	<b>PEDESTAL REACTIONS</b>	
43.8 (TONS) BREAKING STRENGTH	18.5 (TONS) BREAKING STRENGTH	RETRACTED BOOM LENGTH	3,908,550 (FT-LBF) MAXIMUM MOMENT 175,200 (LBF) CORRESPONDING THRUST
45.0 (FPM) FOUR (4) PART REEVING MAXIMUM AVAILABLE HOOK SPEED @ SUPPLY BOAT	161 (FPM) SINGLE (1) PART REEVING MAXIMUM AVAILABLE HOOK SPEED @ SUPPLY BOAT	EXTENDED BOOM LENGTH	3,833,030 (FT-LBF) MAXIMUM MOMENT 108,970 (LBF) CORRESPONDING THRUST
30.0 (FPM) SIX (6) PART REEVING MAXIMUM AVAILABLE HOOK SPEED @ SUPPLY BOAT	214 (FT) MAXIMUM HOOK DROP		
198 (FT) MAXIMUM HOOK DROP			
<b>LOAD BLOCK</b>	<b>OVERHAUL BALL / LOAD BLOCK</b>	<b>STANDARD OPERATING CONDITIONS</b>	
50 (TONS) STATIC LOAD RATING	7 (TONS) STATIC LOAD RATING	N/A (FT) WAVE HEIGHT	
33.3 (TONS) DYNAMIC LOAD RATING	4.7 (TONS) DYNAMIC LOAD RATING	N/A (MPH) WIND SPEED	
16.7 (TONS) PERSONNEL RATING	2.3 (TONS) PERSONNEL RATING	RETRACTED BOOM LENGTH	240,785 (FT-LBF) MAXIMUM THURST 3,891,000 (LBF) CORRESPONDING MOVEMENT
		EXTENDED BOOM LENGTH	170,205 (FT-LBF) MAXIMUM THURST 1,805,845 (LBF) CORRESPONDING MOVEMENT

PART NUMBER: 4LRC-0680  
SERIAL NUMBER: 0602

T1-8F-4 RAKEZ Amenity Center, Al Hamra Industrial Zone-FZ,  
Ras Al Khaimah, United Arab Emirates, PO Box 85631  
Email: [info@gpkmms.com](mailto:info@gpkmms.com) Website: <http://www.gpkmms.com>



STBD AFT - ENERGY CRANES - MODEL EC50

WORKING RADIUS	BOOM ANGLE (DEG)	MAIN HOIST			AUXILIARY HOIST		
		FOUR (4) PART REEVING		PERSONNEL RATED CAPACITY (LBS)	SINGLE (1) PART REEVING		PERSONNEL RATED CAPACITY (LBS)
		ONBOARD CAPACITY (LBS)	OFFBOARD CAPACITY (LBS)		ONBOARD CAPACITY (LBS)	OFFBOARD CAPACITY (LBS)	
10.15	82	50,000	33,335	3,976	6,000	6,000	1,840
15	78	50,000	33,335	3,976	6,000	6,000	1,840
20	74	50,000	33,255	3,976	6,000	6,000	1,840
25	69	39,750	26,165	3,976	6,000	6,000	1,840
30	65	32,530	21,365	3,976	6,000	6,000	1,840
35	61	27,320	17,900	3,976	6,000	6,000	1,840
40	56	23,380	15,280	3,976	6,000	6,000	1,840
45	51	20,300	13,230	3,976	6,000	6,000	1,840
50	45	17,820	11,580	3,976	6,000	6,000	1,840
55	39	15,780	10,225	3,976	6,000	6,000	1,840
60	32	14,080	9,095	3,976	6,000	6,000	1,840
65	24	12,630	8,130	3,976	6,000	6,000	1,840
70	8	11,380	7,300	3,976	6,000	6,000	1,840
71	0	11,250	7,210	3,976	6,000	6,000	1,840

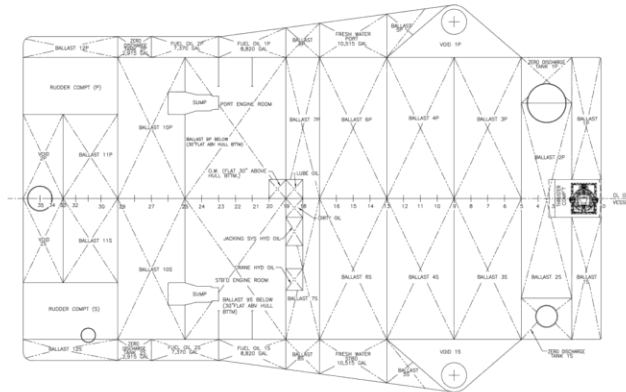
THE ABOVE RATINGS HAVE BEEN REDUCED FROM THE MAXIMUM CRANE RATINGS TO ACCOUNT FOR THE WEIGHT OF THE HOOK & BLOCK AS REQUIRED BY AFI 6TH EDITION THE ABOVE PERSONNEL RATINGS ARE BASED ON API 2C 6TH EDITION.

DYNAMIC LOADS BASED ON THE STANDARD C OF 2.0, UNLESS OTHERWISE STATED USE ONBOARD REEVED CAPACITIES FOR LIFTING FROM OR LANDING ON THE PLATFORM. USE OFFBOARD REEVED CAPACITIES FOR LIFTING FROM OR LANDING ON FLOATING VESSELS.

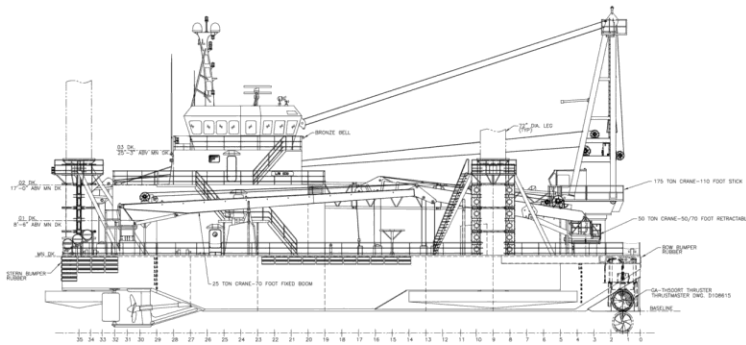
WARNING : OPERATION OF THIS EQUIPMENT BY PERSONNEL NOT QUALIFIED IS STRICTLY PROHIBITED ENERGY CRANES

MAIN HOIST RIGGING INFORMATION	AUXILIARY HOIST RIGGING INFORMATION	BASIS OF STRUCTURAL RATING
<b>WIRE ROPE</b>	<b>WIRE ROPE</b>	<b>DYNAMIC CONDITIONS</b>
0.75 (IN) DIAMETER	0.5625 (IN) DIAMETER	2 (CB) DYNAMIC COEFFICIENT
830 (FT) LENGTH	310 (FT) LENGTH	DEFAULT DYNAMIC METHOD
<b>DYFORM-18 CONSTRUCTION</b>	<b>DYFORM-18 CONSTRUCTION</b>	<b>PEDESTAL REACTIONS</b>
32.4 (TONS) BREAKING STRENGTH	18.5 (TONS) BREAKING STRENGTH	2,132,140 (FT-LBF) MAXIMUM MOMENT
41.3 (FPM) FOUR (4) PART REEVING MAXIMUM AVAILABLE HOOK SPEED @ SUPPLY BOAT	161 (FPM) SINGLE (1) PART REEVING MAXIMUM AVAILABLE HOOK SPEED @ SUPPLY BOAT	133,545 (LBF) CORRESPONDING THRUST
178.0 (FT) MAXIMUM HOOK DROP	190.0 (FT) MAXIMUM HOOK DROP	
<b>LOAD BLOCK</b>	<b>OVERHAUL BALL / LOAD BLOCK</b>	<b>STANDARD OPERATING CONDITIONS</b>
25 (TONS) STATIC LOAD RATING	7 (TONS) STATIC LOAD RATING	N/A (FT) WAVE HEIGHT
16.7 (TONS) DYNAMIC LOAD RATING	4.7 (TONS) DYNAMIC LOAD RATING	N/A (MPH) WIND SPEED
8.3 (TONS) PERSONNEL RATING	2.3 (TONS) PERSONNEL RATING	159,520 (FT-LBF) MAXIMUM THURST
PART NUMBER: 4LRC-0679		1,508,215 (LBF) CORRESPONDING MOVEMENT
SERIAL NUMBER: 0601		

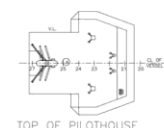
T1-8F-4 RAKEZ Amenity Center, Al Hamra Industrial Zone-FZ,  
Ras Al Khaimah, United Arab Emirates, PO Box 85631  
Email: [info@gpkmms.com](mailto:info@gpkmms.com) Website: <http://www.gpkmms.com>



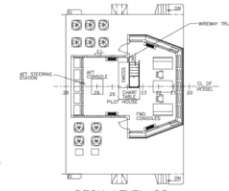
HOLD PLAN



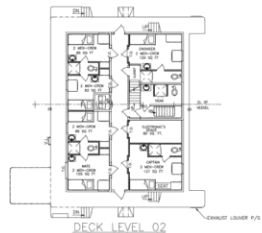
PROFILE



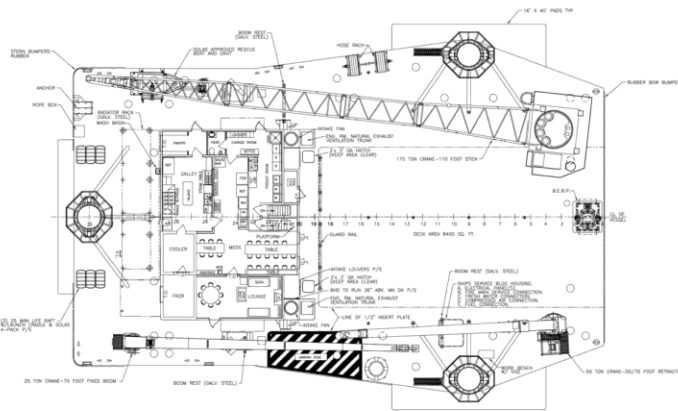
TOP OF PILOTHOUSE



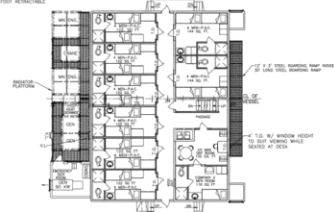
DECK LEVEL 03



DECK LEVEL 02



MAIN DECK PLAN



DECK LEVEL 01