



KINGFISH Technical Specifications

Built	:	Bollinger Shipyard, USA
Date of Built	:	1997
Major Retrofit	:	2012
Port of Registry	:	Panama
Flag	:	Panama
Class Society	:	DNV
Type of Vessel	:	Self Propelled, Self Elevating 229' Liftboat
Max POB	:	Up to 120 bunks Total

PRINCIPAL DIMENSIONS

	Meters	Feet
Length Overall	: 40.54	133 Overall
Breadth	: 24.08	79' Overall
Depth	: 3.96	13'
Hull Shape	: 128'X79'X13'	
Leg length	: 69.8	229'
Spud Cans Width	: 4.3m	14'
Spud Cans Length	: 11.00m	36'
Spud Cans Depth	: 1.22m	4'
Operating Criteria	:	work in water depth of up to 57.3 m with a 3.05 meter air gap and 0 penetration.
Deck Area	:	5000 Sq Ft / 464.5 Sq M without upgraded accommodations. Addition of accommodation capacity may decrease deck space, however, our engineers can work to minimize this space decrease.

*T1-8F-4 RAKEZ Amenity Center, Al Hamra Industrial Zone-FZ,
Ras Al Khaimah, United Arab Emirates, PO Box 85631
Email: info@gpkms.com Website: <http://www.gpkms.com>*



KINGFISH Technical Specifications

Deck Loading : 500,000 lbs or 227 Metric Tons

TONNAGE

Gross Tonnage : 1312.00 tons

Net Tonnage : 393 tons

Draft (Max) : 2.79m 9'-2

ENGINES, JACKING SYSTEM, Jetting System , CRANES

Fuel : 227.1 liters / hour when cruising, 15.9 liters/hour when idle.

Electrical Power plant : 480 volts @ 60 Hz

Main Generators : (2) Marathon / 150 KW

Emergency Generator : (1) 99 KW

Main Engines : (2) 12V149 TI Detroit Diesels 940 bhp each.

Propellers : 2 Stern Propellers

Thruster : 1 Bow Thruster Tunnel 440 bhp

JACKING SYSTEM : Hydraulic, Rack & Pinion (opposing)
Jacking Speed 3.5 Ft/min to 6.0 Ft/min

JETTING SYSTEM : EBR Services , 100hp Sulzer pump
Capacity 580.5 US gpm. 39 bar manifold
max working pressure 600 PSI

CRANES : (1) Titan 100 Ton Crane with 100' Fixed Boom
(1) EBI 25 Ton Crane with 70' Fixed Boom



KINGFISH Technical Specifications

LIFE SAVING EQUIPMENT

Liferafts	Number of liferafts as per regulatory requirements
Lifeboats	2 x 60 person Lifeboats
Fast rescue Boat	SOLAS approved Rescue Boat w/ diesel engine, Capacity 6 persons – Maker: Fassmer

COMMUNICATION AND NAVIGATION EQUIPMENT

VSAT with VOIP / Internet available

Satellite phone	:	Iridium
GMDSS MF/HF/DSC	:	Furuno – FS – 2511; Furuno – Felcom 15
Navtex	:	JRC – NCR 300 R
EPIRB	:	GME MT / 403FF/32369/700
SART	:	2 – ACR – SL3
Public Address	:	Installed and complies with regulatory reqs
Ship Phone	:	Installed and complies with regulatory reqs
Vhf Radio	:	(2) Furuno FM - 8000 + Sea 157 ++ Icom

CAPACITIES

DIESEL FUEL STORAGE CAPACITY: 229,134 LITERS

Fresh Water Storage	:	Storage of 229,134 liters
Fresh Water Generation	:	30,000 liters/day RO Water Maker
Safety Systems	:	Fire Detection, H2S Detection, Tilt Alarm, Engine Alarm, CO ₂ for engine room & Emergency Generator room, Fire monitors on two bow leg towers
Helideck	:	No helideck



KINGFISH

Technical Specifications

	ENERGY CRANES - MODEL TITAN T16000HC LOAD CAPACITY CHART GPK MARINE MANAGEMENT SERVICES GROUP FZ-LLC
--	---

BOOM LENGTH: 100ft	MAIN HOIST: 165ft of 1-1/8" Dyf 18	PART NUMBER: N/A
SERIAL NUMBER: 211-8174-800	AUXILIARY HOIST: 310ft of 3/4" Dyf 18	REVISION: B
LOCATION: M/V KINGFISH	BOOM HOIST: 7/8" 6X19 EEIFS IWRC	RELEASE BY: RMB
RELEASE DATE: 19 OCT 2009	LOAD BLOCK W: 3,000#	PAGE: 1 of 1
MAIN HOIST: CH400A-99160-SPL	AUXILIARY HOIST: CH150A-23120-01-1	

WORKING RADIUS (m)	BOOM ANGLE (deg)	MAIN HOIST			AUXILIARY HOIST		
		EIGHT (8) PART REEVING		PERSONEL RATED CAPACITY (lbs)	SINGLE (1) PART REEVING		PERSONEL RATED CAPACITY (lbs)
		STATIC CAPACITY (lbs)	DINAMIC CAPACITY (lbs)		STATIC CAPACITY (lbs)	DINAMIC CAPACITY (lbs)	
20.0	82	187,848	124,232	47,712	11,000	11,000	3,352
25.0	80	185,596	122,731	47,149	11,000	11,000	3,352
30.0	77	182,830	120,887	46,458	11,000	11,000	3,352
35.0	74	180,824	119,549	45,956	11,000	11,000	3,352
40.0	71	166,088	109,725	42,272	11,000	11,000	3,352
45.0	68	147,229	97,153	37,557	11,000	11,000	3,352
50.0	65	131,973	86,982	33,743	11,000	11,000	3,352
55.0	62	119,376	79,584	30,594	11,000	11,000	3,352
60.0	58	108,798	71,532	27,850	11,000	11,000	3,352
65.0	55	99,788	65,525	25,697	11,000	11,000	3,352
70.0	51	92,020	60,347	23,755	11,000	11,000	3,352
75.0	47	85,253	55,835	22,063	11,000	11,000	3,352
80.0	43	79,305	51,870	20,576	11,000	11,000	3,352
85.0	39	74,033	48,355	19,258	11,000	11,000	3,352
90.0	34	69,328	45,218	18,082	11,000	11,000	3,352
95.0	28	65,099	42,399	17,025	11,000	11,000	3,352
100.0	21	61,274	39,849	16,069	11,000	11,000	3,352
105.0	9	57,781	37,521	15,195	11,000	11,000	3,352
MAX	0	55,234	35,823	14,559	11,000	11,000	3,352

THE ABOVE RATINGS ARE BASED ON API 2C THE 5TH EDITION
 & DOES INCLUDE THE WEIGHT OF THE LOAD BLOCK
 MAIN & AUX LINE DINAMIC RATING IS BASED ON 2.0 DYNAMIC FACTOR
 THE WEIGHT ON THE LOAD BLOCK MUST BE INCLUDED INTO
 THE WEIGHT OF THE LIFTED LOAD
 USE STATIC REEVED CAPACITIES FOR LIFTING FROM OR LANDING ON THE PLATFORM
 USE DINAMIC REEVED CAPACITIES FOR LIFTING FROM OR LANDING ON FLOATING VESSELS

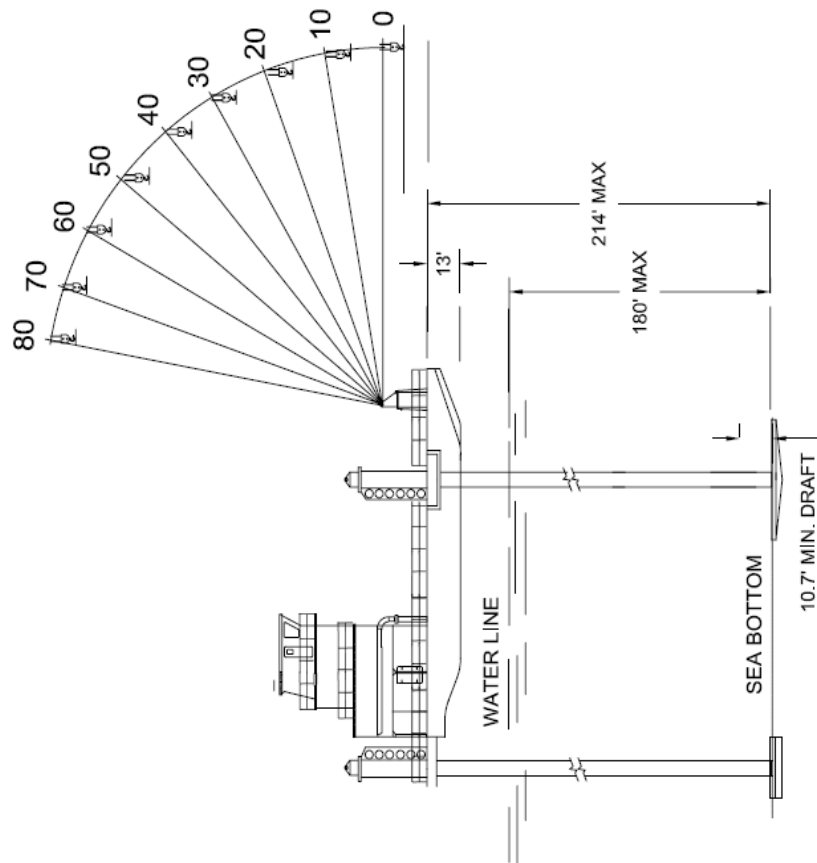
WARNING
 OPERATION OF THIS EQUIPMENT BY PERSONNEL
 NOT QUALIFIED IS STRICTLY PROHIBITED
 ENERGY CRANE

KINGFISH

Technical Specifications

ANGLE DEGREE	RADIUS (FT.)	RETRACTED TO 50'				ANGLE DEGREE	RETRACTED TO 70'			
		LOAD LINE LBS.		FAST LINE LBS.			LOAD LINE LBS.		FAST LINE LBS.	
		STATIC (LBS.)	DYNAMIC (LBS.)	STATIC (LBS.)	DYNAMIC (LBS.)		STATIC (LBS.)	DYNAMIC (LBS.)	STATIC (LBS.)	DYNAMIC (LBS.)
78	10	20,290	20,290	4,890	4,890	82	20,090	20,090	4,890	4,890
73	15	20,290	20,290	4,890	4,890	78	16,860	20,090	4,890	4,890
67	20	16,890	20,290	4,890	4,890	73	12,090	18,860	4,890	4,890
60	25	15,340	20,290	4,890	4,890	69	10,040	15,765	4,890	4,890
54	30	12,960	20,115	4,890	4,890	65	8,390	13,290	4,890	4,890
46	35	10,990	17,190	4,890	4,890	60	7,090	11,340	4,890	4,890
38	40	9,930	14,790	4,890	4,890	56	6,190	9,990	4,890	4,890
27	45	7,890	12,540	4,890	4,890	50	5,240	8,565	4,890	4,890
0	50	4,490	7,440	4,890	4,890	45	4,590	7,590	4,890	4,890
	55					39	4,040	6,765	4,890	4,890
	60					32	3,590	6,090	3,690	4,890
	65					23	3,190	5,490	3,190	4,890
	70					0	1,790	3,390	1,790	3,390

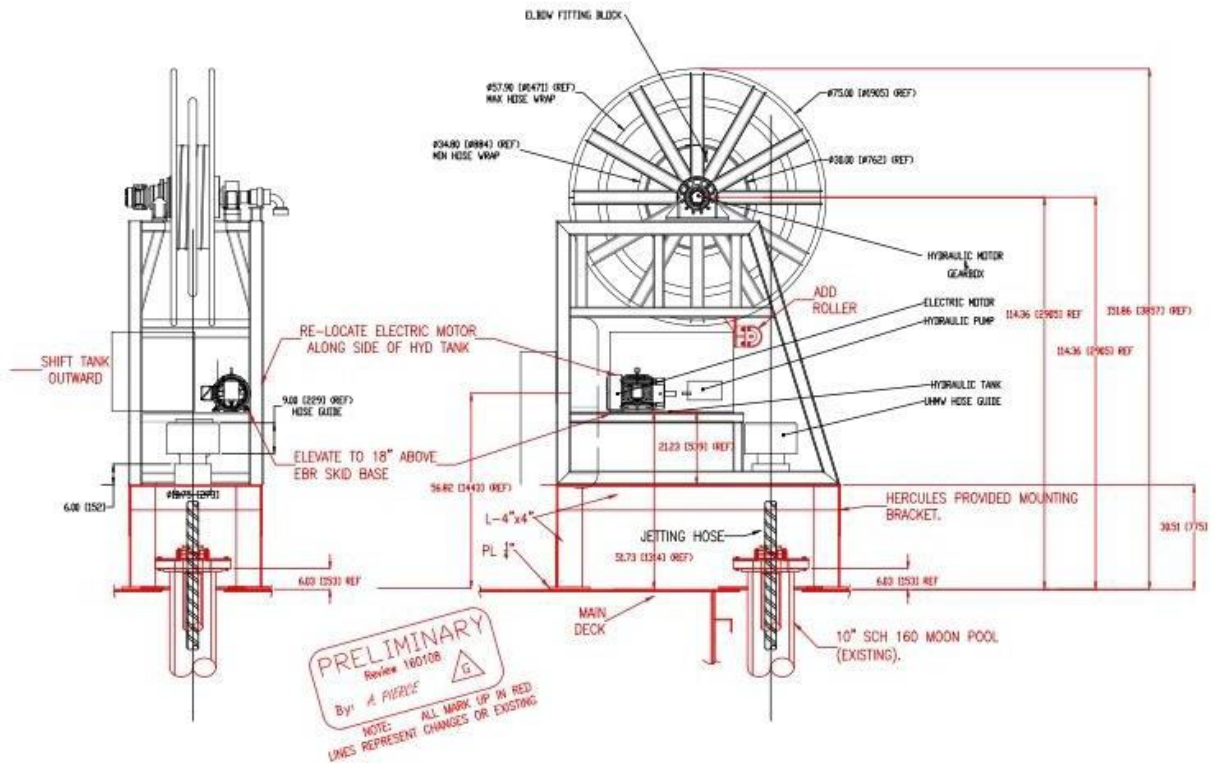
CLASS 229 With 25 ton Crane
50 ft retracted and 70 ft extended



KINGFISH

Technical Specifications

JETTING SYSTEM



KINGFISH Technical Specifications

SULZER

