

## RAWABI 607 Technical Specifications



<b>Year Built</b>	<b>: 2016</b>	<b>Hull Length Overall</b>	<b>: 56.64 m</b>
<b>Construction Yard</b>	<b>: Triyards SSY</b>	<b>Length (incl. Helideck)</b>	<b>: 79.76 m</b>
<b>Flag State</b>	<b>: TUVALU</b>	<b>Breadth Moulded</b>	<b>: 40.00 m</b>
<b>Port of Registry</b>	<b>: FUNAFUTI</b>	<b>Depth Moulded</b>	<b>: 5.00 m</b>
<b>IMO Number</b>	<b>: 9739551</b>	<b>Design Loaded Draft</b>	<b>: 3.40 m</b>
<b>Class</b>	<b>: ABS</b>	<b>Leg Length</b>	<b>: 102.50 m</b>
<b>Gross Tonnage</b>	<b>: 5545</b>	<b>Usable Length Below Hull</b>	<b>: 86.00 m</b>
<b>Net Tonnage</b>	<b>: 1663</b>	<b>Maximum Water Depth</b>	<b>: 77.50 m</b>
<b>Clear Deck Space</b>	<b>: 1,300 m<sup>2</sup></b>	<b>Leg Diameter</b>	<b>: 3.05 m</b>
<b>Deck Loading</b>	<b>: 5 MT/m<sup>2</sup></b>	<b>Leg Type</b>	<b>: Tubular</b>



## RAWABI 607 Technical Specifications

### MACHINERY AND PROPULSION

<b>Main Generators</b>	4x Caterpillar Model CAT 3512C 1360kW@1800rpm
<b>Auxiliary Generators</b>	Main generators also work as auxiliary generators
<b>Emergency Generators</b>	1x Caterpillar Model CAT C18 400kW@1800rpm
<b>Aft Thrusters</b>	2 x Azimuth Stern Drive, Berg MTA 523 Rated Power 1500 kW
<b>Fwd Thrusters</b>	1 x Tunnel Thruster, Berg MTT 113 Rated Power 440 kW
<b>Service Speed</b>	6.0 knots

### JACKING SYSTEMS

<b>Type</b>	Rack and Pinion
<b>Number of Pinions</b>	42 (14 per leg)
<b>Power System</b>	Fairfield S350 Electric Hydraulic
<b>Jacking Speed</b>	3 ft/min

### ACCOMMODATION FACILITIES

<b>Personnel Capacity</b>	151 men (incl. crew)
<b>Room Allotment</b>	4 x 1 men cabins 3 x 1 men VIP cabins 72 x 2 men cabins

### CRANES

<b>Port Crane</b>	250 MT @ 7.6m 35.4 MT @ 39.4 m Aux 20 MT @ 43.0 m
<b>Stbd Crane</b>	250 MT @ 7.6m 35.4 MT @ 39.4 m Aux 20 MT @ 43.0 m
<b>Man Riding</b>	2.0 MT @ 43.0 m

### DECK AND TANK CAPACITIES

<b>Variable Deck Load</b>	1320 MT
<b>Potable Water Tk(C)</b>	484,22 Ltrs
<b>Permanent Ballast</b>	483 MT
<b>Fuel Oil</b>	573,950 Ltrs

### AUXILIARY SYSTEMS

<b>Water Makers</b>	2x 20 MT/day
<b>Submersible Pump</b>	2x 275 m <sup>3</sup> /hr 2x 550 m <sup>3</sup> /hr
<b>Air Compressors</b>	2x 49 m <sup>3</sup> /hr

### HELIDECK FACILITIES

<b>Compliance</b>	UK CAP 437 9 <sup>th</sup> Edition Sikorsky
<b>Helicopter Equiv.</b>	S61 & S92



REVISION HISTORY			
REV.	DESCRIPTION	DATE	APPROVAL
A	ISSUED FOR REVIEW	7-Nov-22	-
B	UPDATED CLIENT'S COMMENTS	30-Nov-22	-
C	UPDATED HVAC EQUIPMENT	17-Jan-23	-
D	1. ADDED TWO SUBMERSIBLE PUMPS P&S WITH THEIR PLATFORM ON MAIN DECK. 2. ADDED FAN COIL UNIT ON WHEELHOUSE DECK AT STBD. 3. ADDED FAN COIL UNIT ON WHEELHOUSE TOP AT CL.	31-Mar-23	-
E	1. CORRECTED ROOM NUMBERS ON QUARTER DECK. 2. UPDATED ACCOMMODATION EQUIPMENT AS PER OWNER'S INFORMATION. 3. UPDATED LOCATION OF FIRE MONITORS TO BESIDE HPU PLATFORM.	6-May-23	GPK
F	UPDATED CLIENT'S COMMENTS	15-May-23	GPK
G	1. UPDATED VESSEL NAME FOR HULL SHELL AND HELIDECK. 2. UPDATED AIRTIGHT DOORS AT ACCOMMODATION. 3. UPDATED FENDER AT FWD. LOCATION.	19-May-23	GPK
H	1. UPDATED FOAM MONITORS AND HOSE REEL FOR HELIDECK. 2. UPDATED AIRTIGHT DOOR ON 1 DECK AT STBD AFT ACCOMMODATION. 3. UPDATED ACCORDING TO HVAC INFORMATION. 4. UPDATED PLATFORM AND FIXING DETAILS FOR VSAT ANTENNA. 5. UPDATED CASCADE EQUIPMENT.	2-Jun-23 5-Jul-23	GPK

REFERENCE			
No.	DRAWING TITLE	DRAWING NUMBER	REVISION
1	OUTBOARD PROFILE	479-A201	X00
2	MAIN DECK ARRANGEMENT	479-A202	X00
3	HOLD PLAN	479-A203	X00
4	QUATER ARRANGEMENT	479-A204	X00

**PRINCIPAL PARTICULARS**


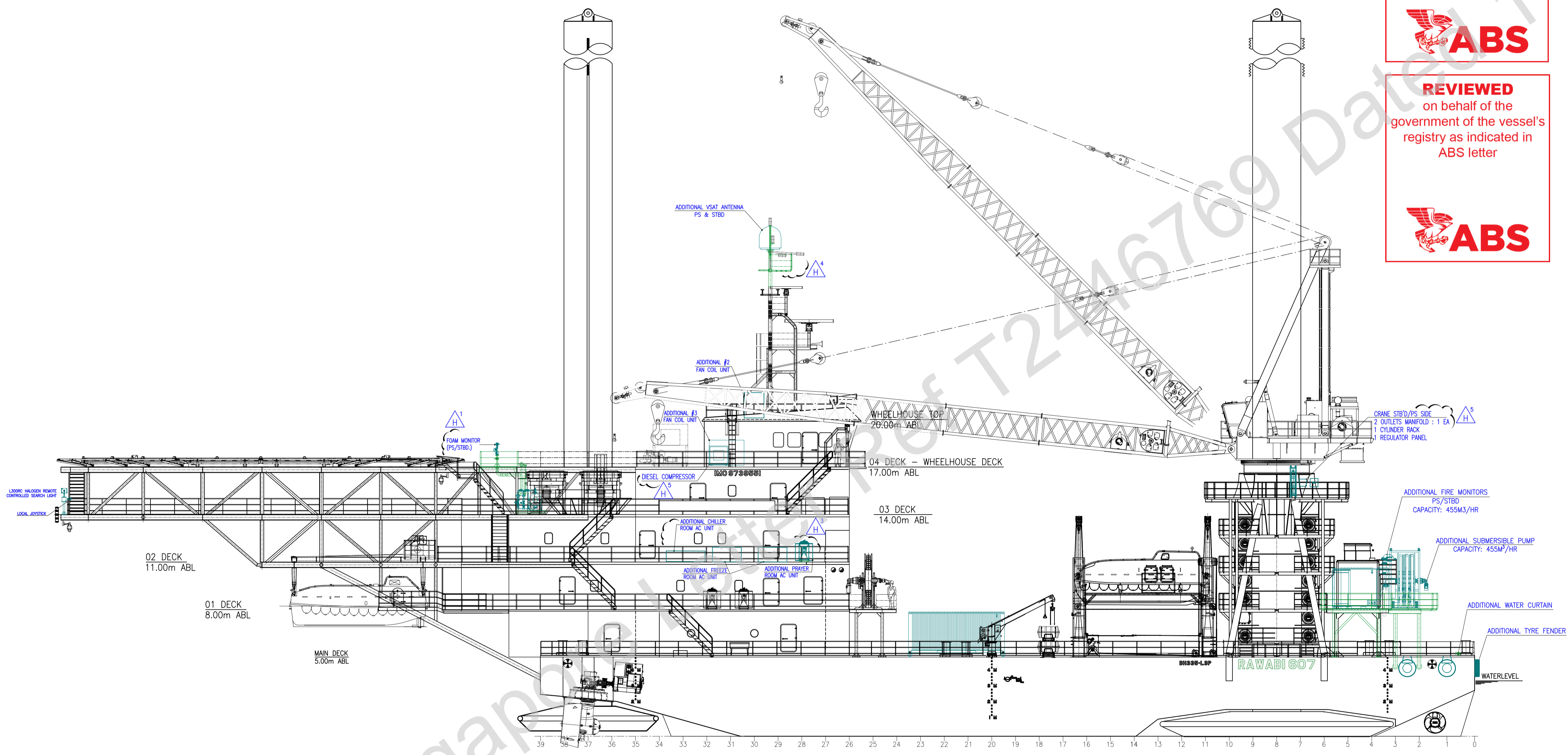
HULL (OVERALL)  
 LENGTH, MOLDED.....59m  
 BEAM, MOLDED.....40m  
 DEPTH, MOLDED .....5m  
 LEG LENGTH..... 102.5m  
 DECK CARGO WORK AREA.....1360 m<sup>2</sup>  
 OPEN DECK AREA.....1475 m<sup>2</sup>  
 ACCOMMODATION.....151 MEN

Item	Current	AFTER MODIFICATION	
		Barge	ARAMCO
1 Men Cabins	4	4	3
2 Men Cabins	78	40	32
Total POB	160	151	
Private Toilets	82	79	
Common Toilets	4 Spaces	5 Spaces	
Urinals	4	8	
Showers	3	5	
Basins	83	80	
	93	90	

**REVIEWED**  
 Details of this review are as indicated in the ABS letter




**REVIEWED**  
 on behalf of the government of the vessel's registry as indicated in ABS letter

OUTBOARD PROFILE

THIS DOCUMENT IS THE PROPERTY OF CSV OFFSHORE & MARINE. ALL INFORMATION CONTAINED HEREIN SHALL BE TREATED AS CONFIDENTIAL AND NOT TO BE REPRODUCED, USED, DISCLOSED NOR TRANSMITTED WITHOUT THE WRITTEN PERMISSION OF CSV OFFSHORE & MARINE GENERAL MANAGER.

OWNER:  
 **GP MARINE MANAGEMENT SERVICES GROUP FZ-LLC**  
 ADDRESS: T1-8F-4 RAKEZ Amenity Center, Al Hamra Industrial Zone-FZ, Ras Al Khaimah, United Arab Emirates, PO Box 85631

DESIGNER:  
 **CSV OFFSHORE & MARINE PTE LTD**  
 ADDRESS: NO.01, DARYLFARM HEIGHTS, #09-04, 677866, SINGAPORE.

PROJECT NAME:  
**RAWABI 607**

DRAWING TITLE:  
**GENERAL ARRANGEMENT**

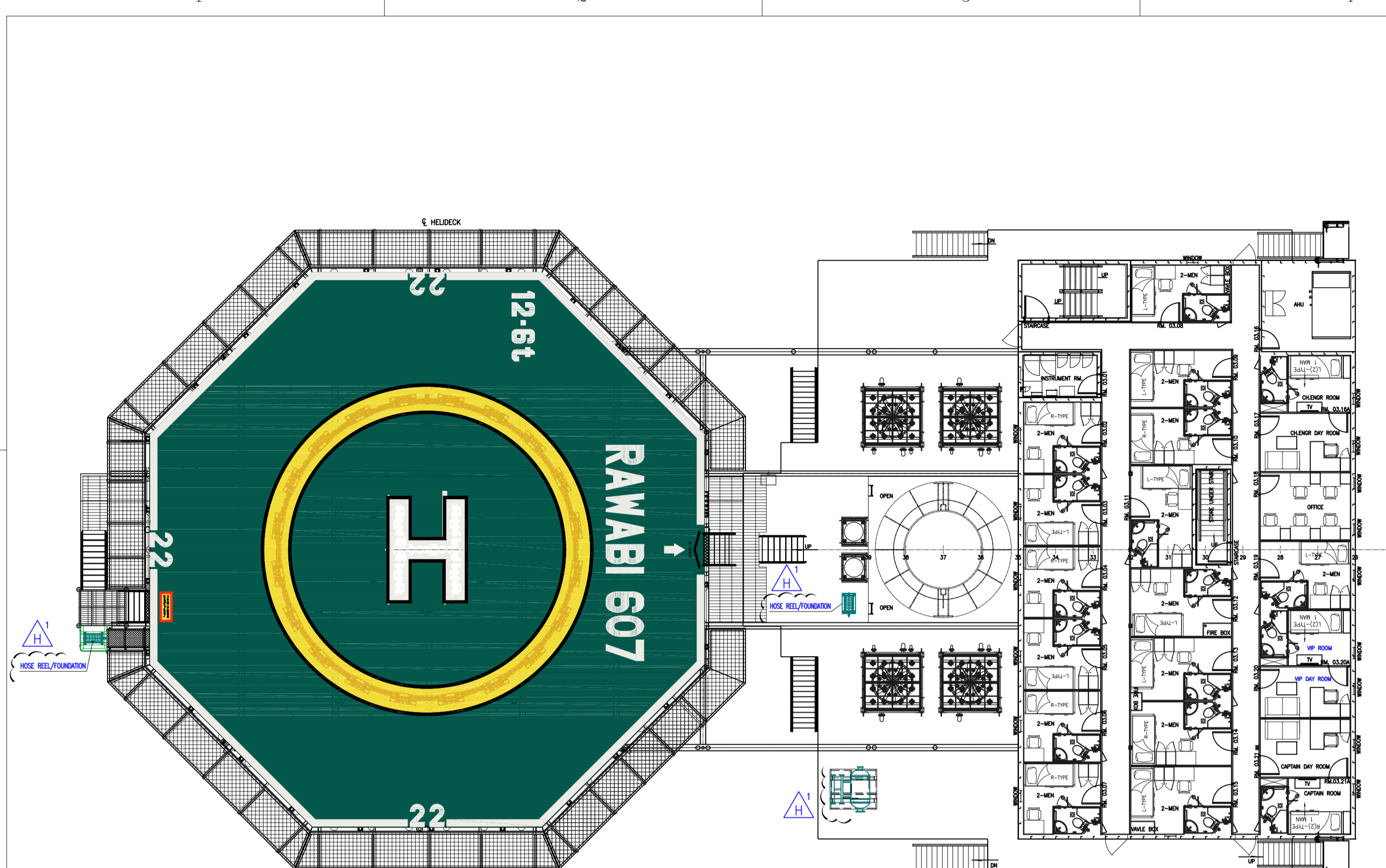
DRAWING NO.:  
**CSV09B-101-G-100**

DRAWN BY:	CHECKED BY:	CERTIFIED BY:	APPROVED BY OWNER:
D.T.H	H.D.C	L.G.M	-

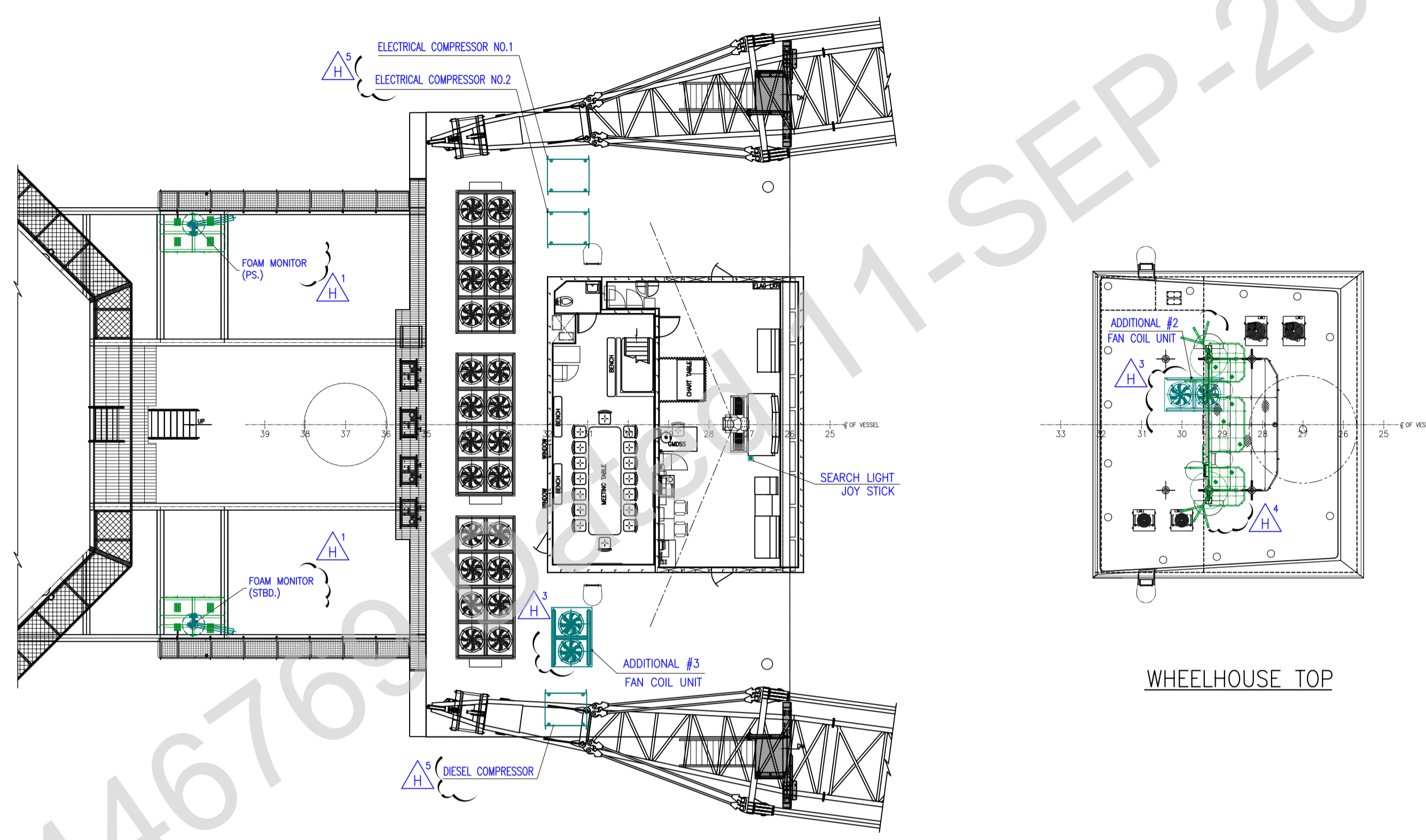
DATE:	PROJECT NO.:	SHEET:	REV.:	SCALE:	SIZE:
7-Nov-22	CSV09B	1/4	H	1/150	A1

See ABS Singapore

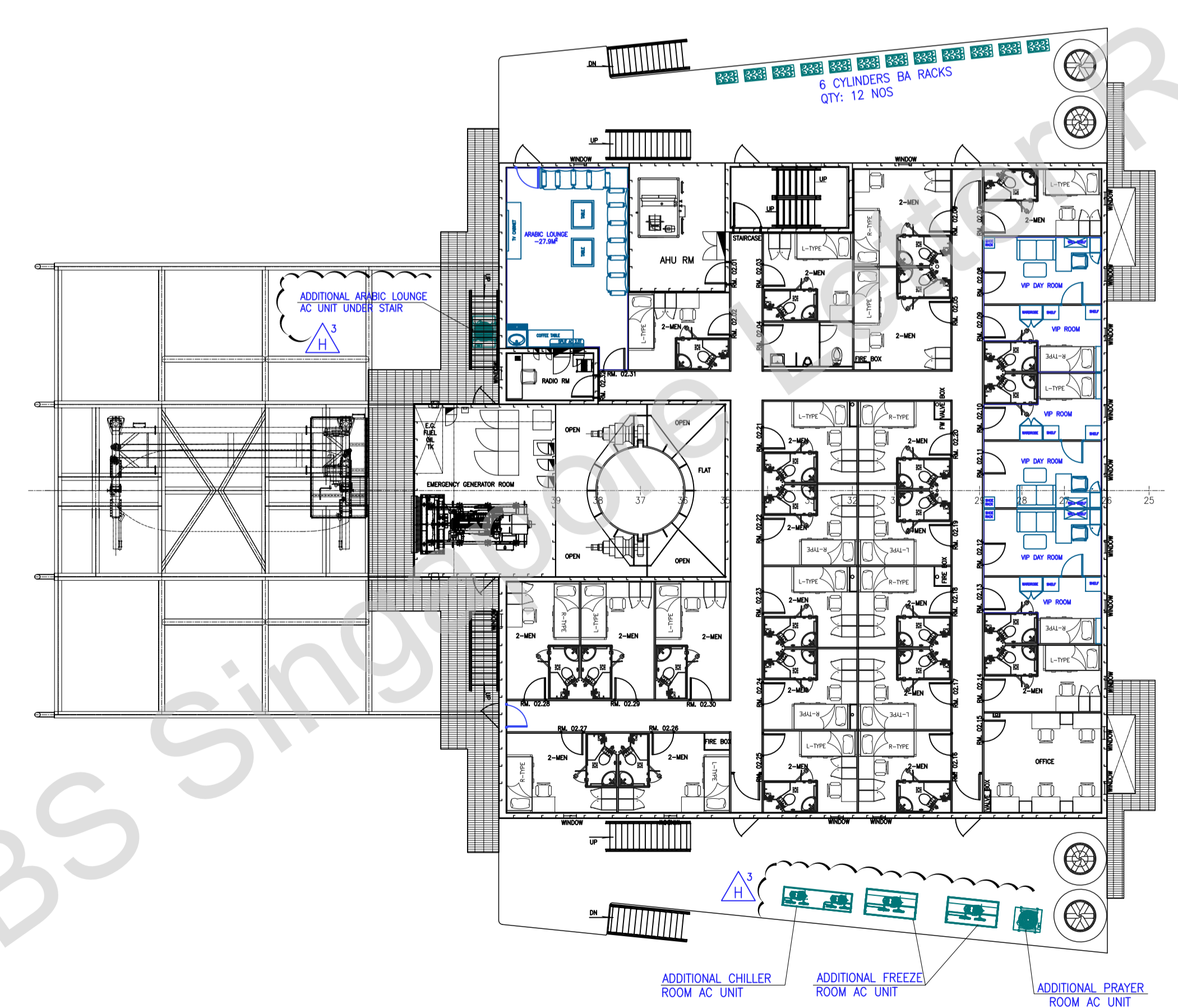




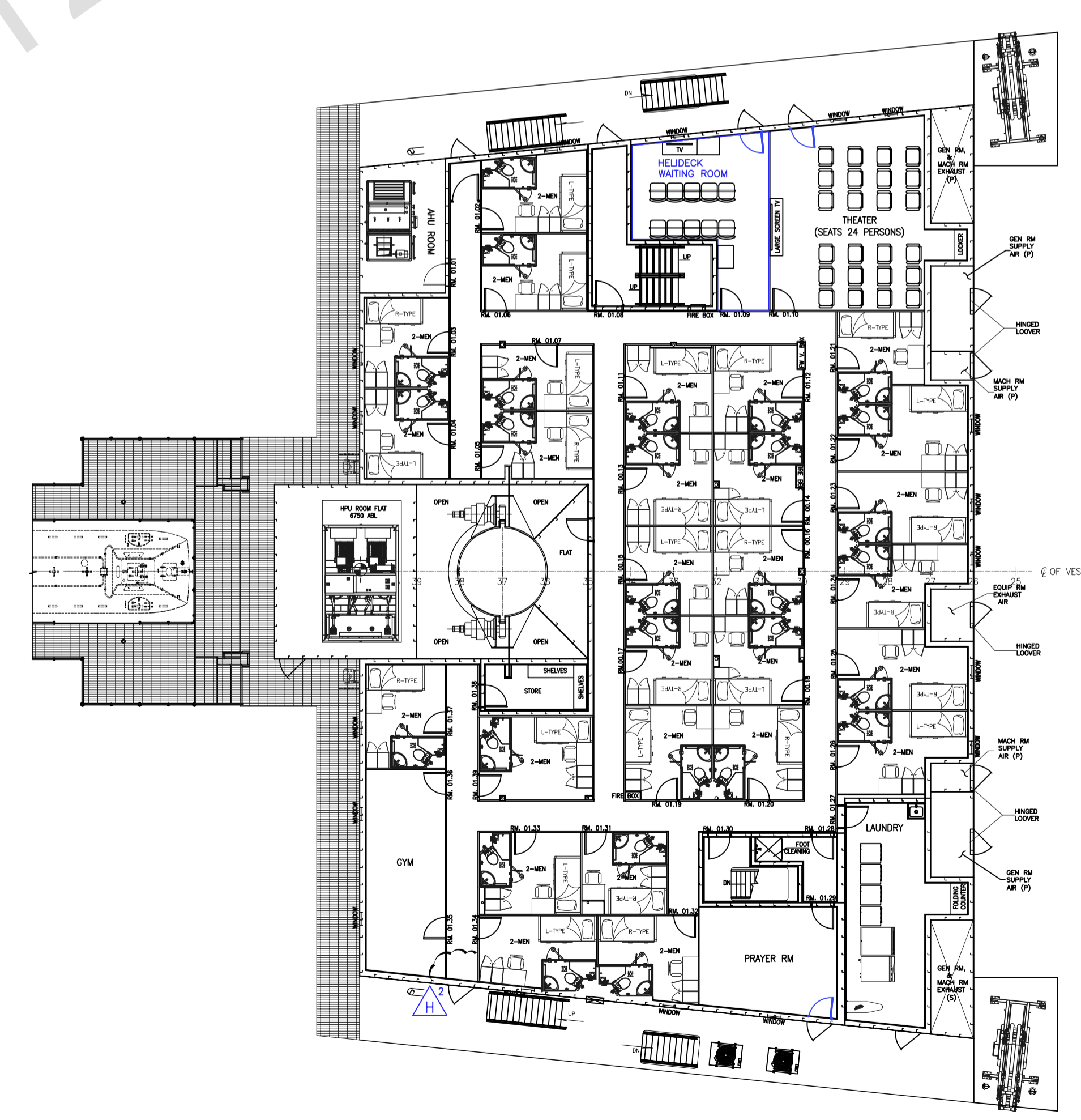
**03 DECK PLAN**  
 3 - 1 MAN CABIN  
 15 - 2 MEN CABINS



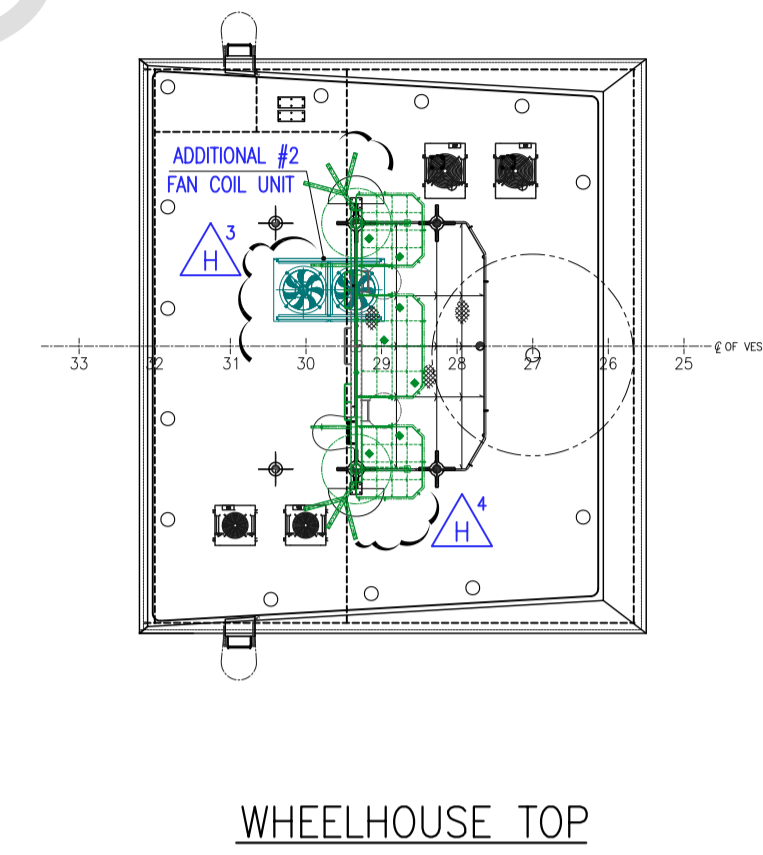
**04 DECK - WHEELHOUSE DECK**



**02 DECK PLAN**  
 3 - 1 MAN CABINS  
 21 - 2 MEN CABINS



**01 DECK PLAN**  
 28 - 2 MEN CABINS

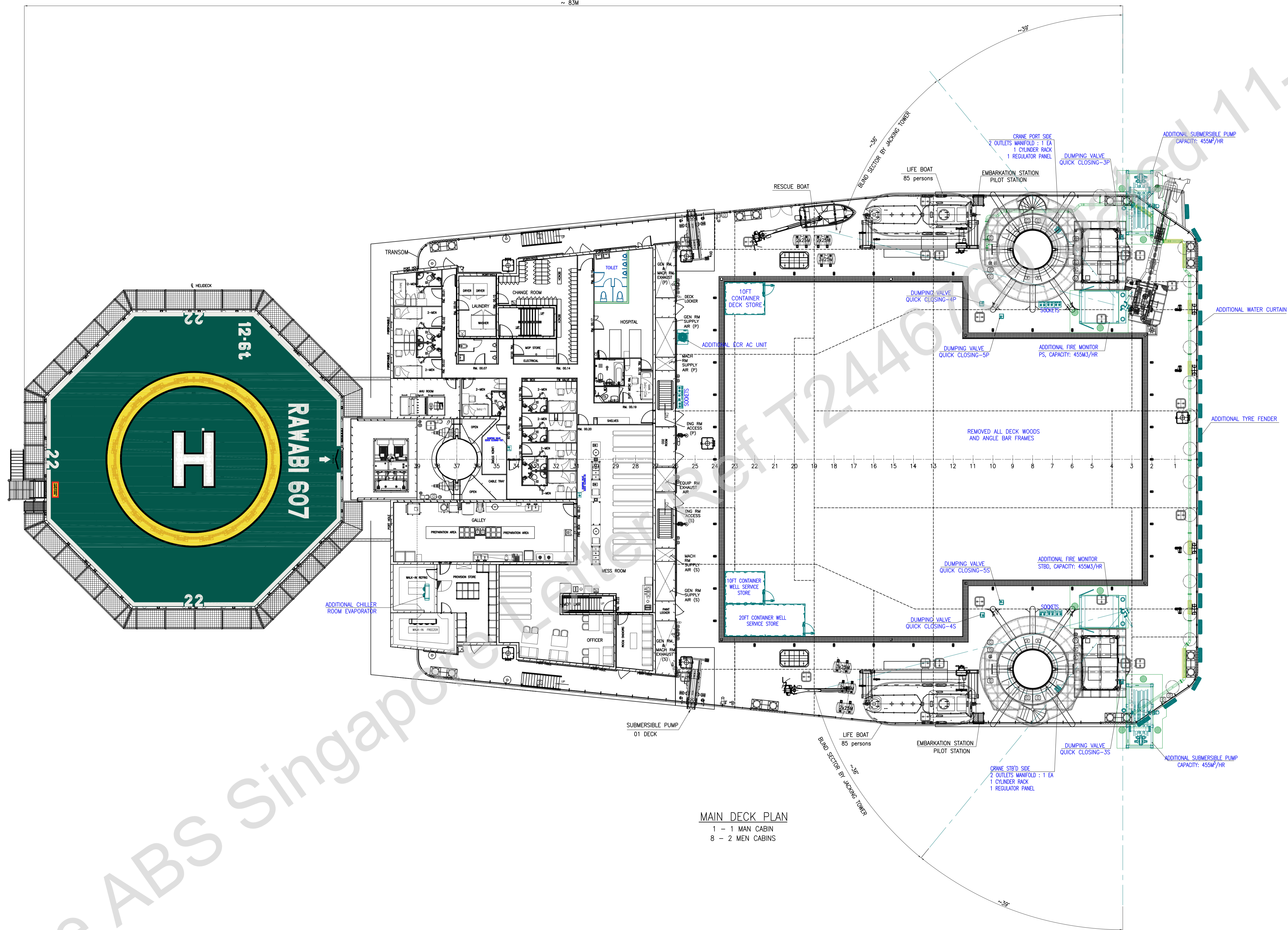


**WHEELHOUSE TOP**

See ABS Singapore Ref T2446769

DRAWING NO:		CSV09B-101-G-100			
PROJECT NO:	SHEET:	REV:	H	SCALE:	SIZE:
CSV09B	2/4	1/150			A1

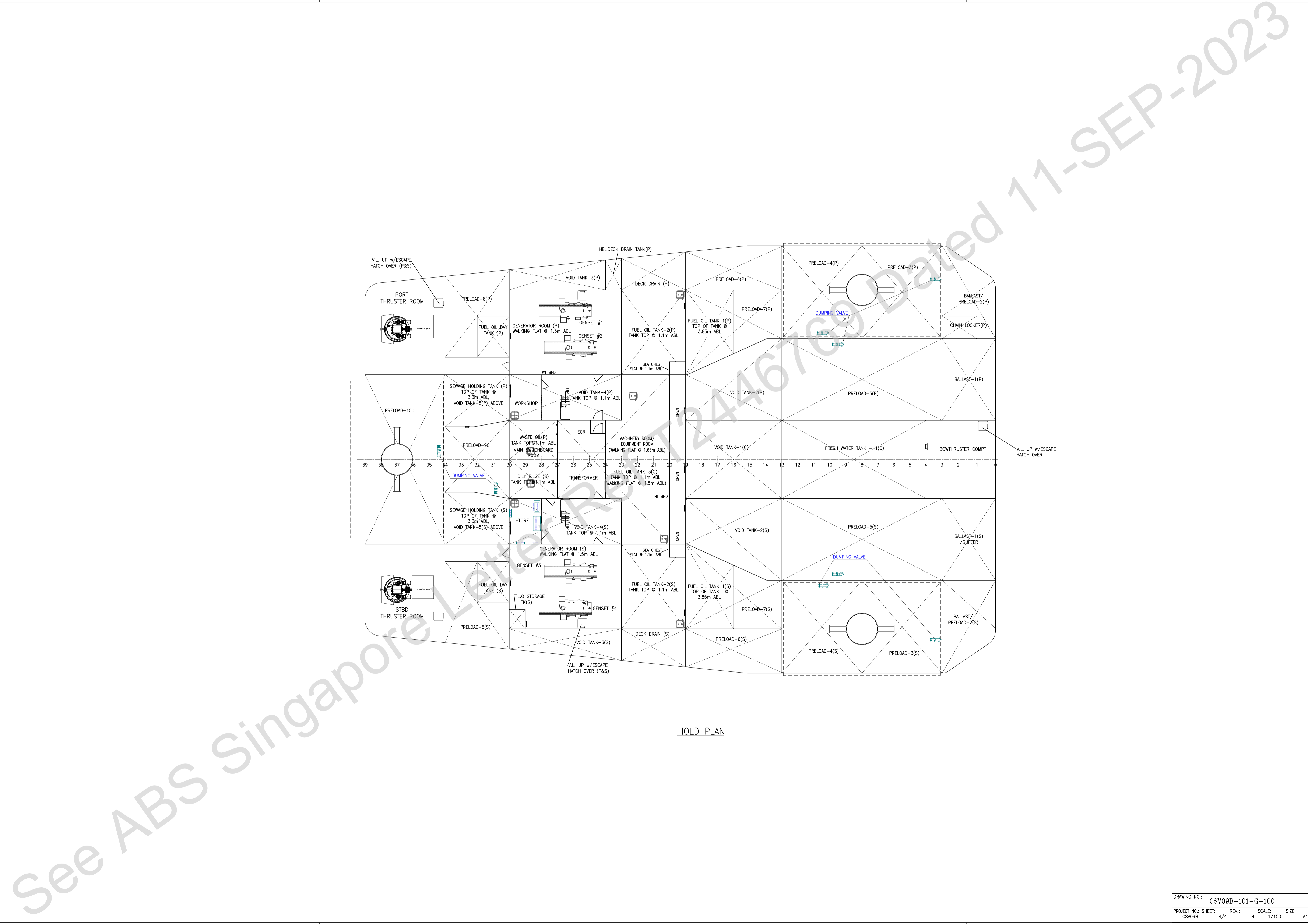




MAIN DECK PLAN  
 1 - 1 MAN CABIN  
 8 - 2 MEN CABINS

DRAWING NO.:		CSV09B-101-G-100	
PROJECT NO.:	SHEET:	REV.:	SCALE:
CSV09B	3/4	H	1/150
SIZE:		A1	





HOLD PLAN

See ABS Singapore

244676

11-SEP-2023

DRAWING NO:		CSV09B-101-G-100			
PROJECT NO:	SHEET:	REV.:	SCALE:	SIZE:	
CSV09B	4/4	H	1/150	A1	